

# LEDLINE AIR 1010 PRO WHT - COMBO SYSTEM

3D Bending · Static White

(Standard Cut + Free Cut Finishing Piece)

## Features

The AIR Combo System combines standard cut and free cut capabilities to provide precise, made-to-order lengths, utilizing Standard Cuts for the majority of the runs, with Free Cuts reserved only for the finishing segments. This combo usage achieves cost savings of 20–40% versus using Free Cuts for the entire length. Both AIR Standard Cut and Free Cut maintain consistent binning and brightness.

The system is suitable for indoor and outdoor applications, and delivers exceptional performance with a CRI over 95, brightness of up to 861 lm/m, and 1-step binning, ensuring robustness and design flexibility.

## Applications

VIP lounges, luxury retail, curatorial feature walls, under-vitrine illumination, gallery accent walls, architectural coves, showcase and museum, etc.

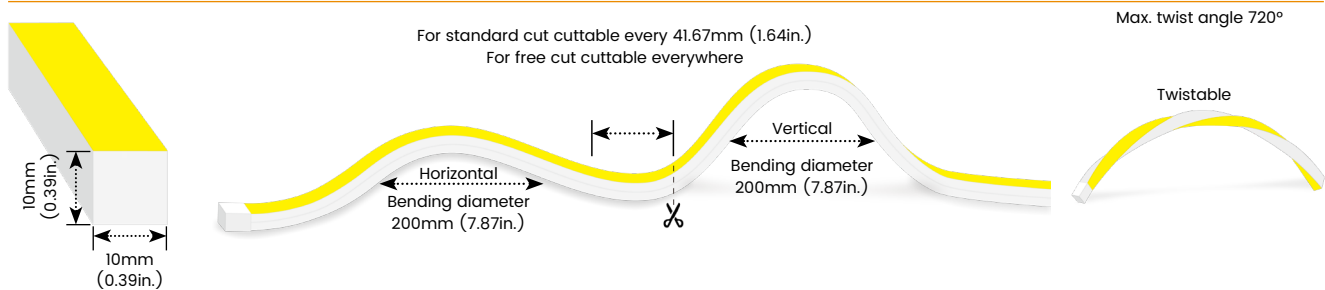
Date	Fixture type
Project name	Project phase



## Combo System



## Bending Directions & Diameters



## Order Code

## Assembly Builder

Model	Bend Direction	Voltage	CCT	Power	Left Feed Entry			
AIR1010P	3D-3D bending	24V-DC24V	9527-RA95 2700K	100-10W/M	F	Front	OW	Open wire 30cm (0.98ft)
	3DFC-3D bending Free Cut		9530-RA95 3000K		B	Bottom	MC	Male connector with 30cm (0.98ft) cable
			9540-RA95 4000K		S	Side	FC	Female connector with 30cm (0.98ft) cable
				C	Closed	NA	Only for Closed Feed Entry	

\*AIR1010P3DFC: Free Cut delivers precise field-cut lengths for the last segment, while keeping in line with standard cut in dimensions, binning, output, and mounting for a uniform appearance.

## Assembly Builder

## Mounting Order Code

Right Feed Entry			Length	
F	Front	OW	Open wire 30cm (0.98ft)	Max. nominal 5m (16.4ft) AIR1010P3D
B	Bottom	MC	Male connector with 30cm (0.98ft) cable	Max. nominal 4m (13.12ft) AIR1010P3DFC
S	Side	FC	Female connector with 30cm (0.98ft) cable	Increment 41.67mm (1.64in.)
C	Closed	NA	Only for Closed Feed Entry	

Product Code
Please select on the Mounting Options page

\*We will list the nearest actual manufacturing length on the quotation, based on your requested length.

# LEDLINE AIR 1010 PRO WHT - COMBO SYSTEM

3D Bending · Static White

(Standard Cut + Free Cut Finishing Piece)

## Lumen Output (lm/m)

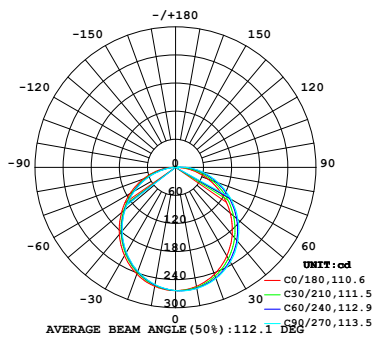
CCT	10W/M
■ 2700K	757
■ 3000K	782
■ 4000K	861
Max. Run for standard cut	5m
Max. run for Free cut	4m

## Technical Details

Efficacy	78.2lm/W @3000K 10W
CRI	CRI>95
Beam Angle	110°
LED MacAdam	1 step
IK Rating	IK07
Average Life (L80B50)	>44,000 hours
Storage Temperature	-40°C- 65°C
Operating Temperature	-40°C- 65°C

## Photometry

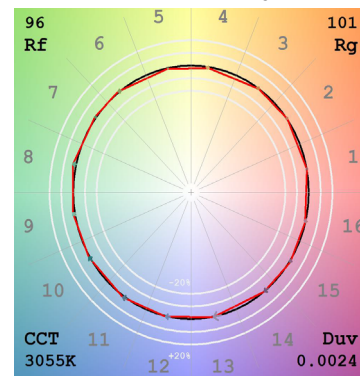
AIR1010P3D-24-9530-100  
LEDLINE AIR 1010 PRO, 3D bending, 24V, RA95, 3000K, 10W/M



### Zonal Lumen Summary

Zone	Lumen	% Fixture
0-30	203.3	26.0%
0-40	332.0	42.5%
0-60	586.7	75.0%
0-90	767.0	98.1%
0-180	782.1	100.0%

TM30  
AIR1010P3D-24-9530-100  
LEDLINE AIR 1010 PRO, 3D bending, 24V, RA95, 3000K, 10W/M



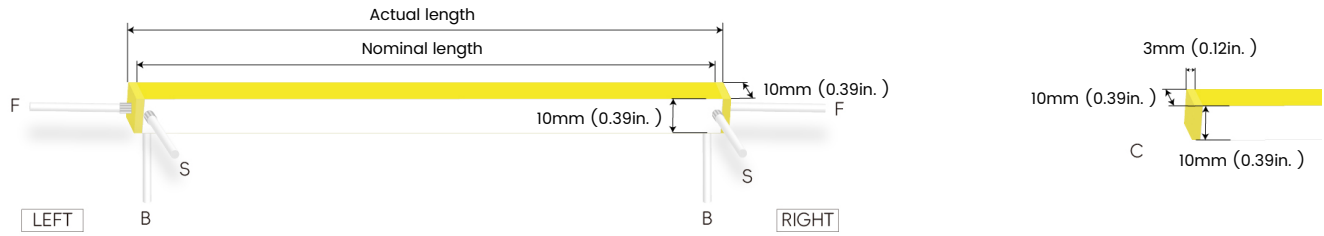
# LEDLINE AIR 1010 PRO WHT - COMBO SYSTEM

3D Bending · Static White

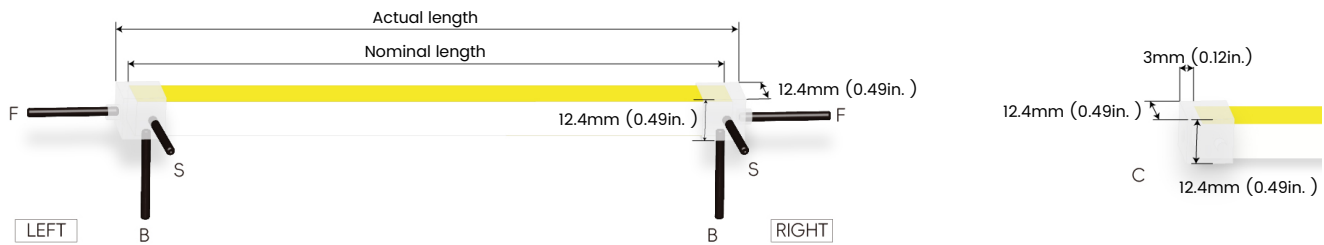
(Standard Cut + Free Cut Finishing Piece)

## Feed Entry / End Cap Options

### FT: Flush Translucent – IP67, factory-made only



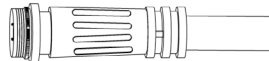
### Silicone end cap – IP67, for field cuttable only



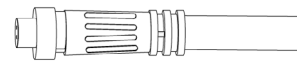
## Connector Wire Options



**OW:** Open wire, **Dry only**  
Standard 30cm (0.98ft), 20 AWG,  
wire length customizable



**MC:** Male connector, **Wet**  
Standard 30cm (0.98ft), 20 AWG



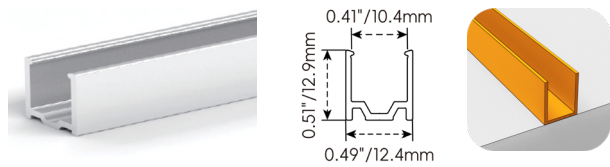
**FC:** Female connector, **Wet**  
Standard 30cm (0.98ft), 20 AWG

# LEDLINE AIR 1010 PRO WHT - COMBO SYSTEM

3D Bending · Static White

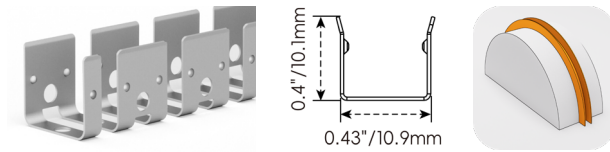
(Standard Cut + Free Cut Finishing Piece)

## Mounting Options



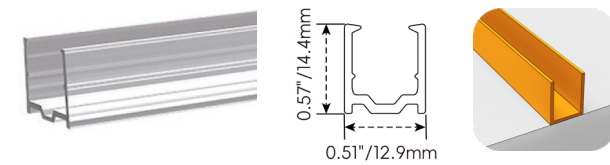
### AC023-AP

Name	Straight surface profile
Material	Aluminum
Standard Length	1M (3.28ft)



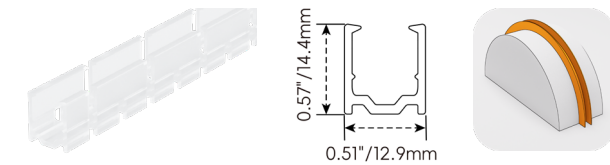
### AC023-CR

Name	Bendable surface profile
Material	Stainless Steel
Standard Length	500mm (1.64ft)
Min. Bend Diameter	100mm (3.94in.)
*Not suitable for upside-down installation	



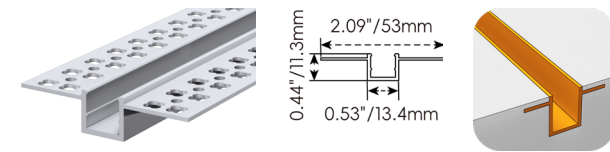
### AC023-PC

Name	PC profile
Material	PC
Standard Length	1M (3.28ft)



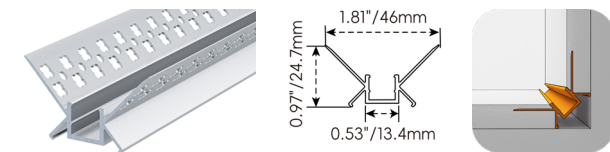
### AC023-CPC

Name	Bendable PC profile
Material	PC
Standard Length	1M (3.28ft)
Min. Bend Diameter	100mm (3.94in.)



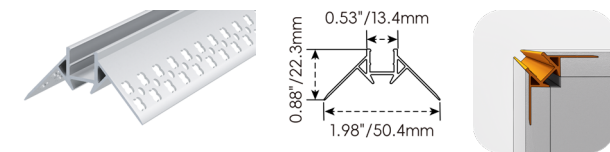
### AC023-LP

Name	Mud-in profile
Material	Aluminum
Standard Length	1M (3.28ft)



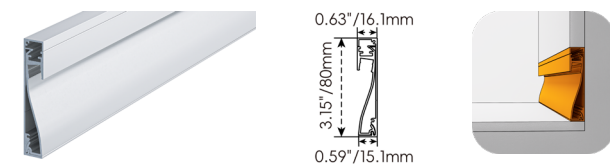
### AC023-ICP

Name	Inside corner profile
Material	Aluminum
Standard Length	1M (3.28ft)



### AC023-OCP

Name	Outside corner profile
Material	Aluminum
Standard Length	1M (3.28ft)



### AC023-SP

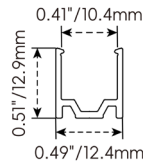
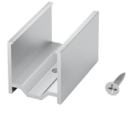
Name	Skirting board profile
Material	Aluminum
Standard Length	1M (3.28ft)

# LEDLINE AIR 1010 PRO WHT - COMBO SYSTEM

3D Bending · Static White

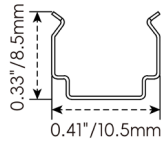
(Standard Cut + Free Cut Finishing Piece)

## Clip Options



### AC025-MC

Name	Mounting clip
Material	Aluminum
Standard Length	25mm (0.98in. )

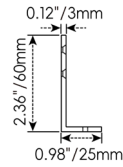


### AC025-SET

Name	Mounting clip
Material	Stainless Steel
Standard Length	7mm (0.28in. )

\*Not suitable for upside-down installation

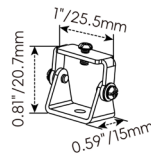
## Bracket Options



### AC167-SET-LA

Name	L-shaped mounting bracket
Material	Aluminum
Standard Length	20mm (0.79in.)

\* AC167-SET-LA must be installed with AC023-AP



### AC167-AMB

Name	Adjustable mounting clip
Material	Stainless steel
Standard Length	25.5mm (1 in.)

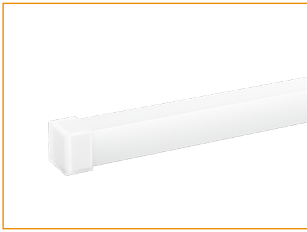
\* AC167-AMB must be installed with AC023-AP

# LEDLINE AIR 1010 PRO WHT - COMBO SYSTEM

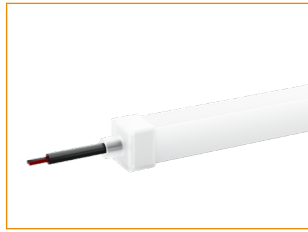
3D Bending · Static White

(Standard Cut + Free Cut Finishing Piece)

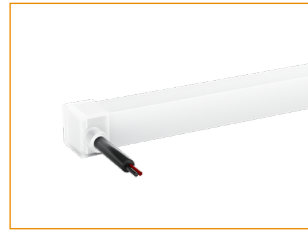
## Silicone End Caps (Optional, purchase for extra )



**AD025A**  
Silicone closed end cap



**AD025-2-F**  
Silicone end cap front entry with 30cm (0.98ft) cable, 2 pin



**AD025-2-S**  
Silicone end cap side entry with 30cm (0.98ft) cable, 2 pin



**AD025-2-B**  
Silicone end cap bottom entry with 30cm (0.98ft) cable, 2 pin

## Additional Accessories (Optional, purchase for extra)



**AD101-2-MCW**  
Male connector, 30cm (0.98ft) UL white cable, 2 pin, IP67, Wet, 20 AWG



**AD101-2-FCW**  
Female connector, 30cm (0.98ft) UL white cable, 2 pin, IP67, Wet, 20 AWG



**AD101-2-MCW**  
Male connector, 30cm (0.98ft) black cable, 2 pin, IP67, Wet, 20 AWG



**AD101-2-FCW**  
Female connector, 30cm (0.98ft) black cable, 2 pin, IP67, Wet, 20 AWG



**AF001-1**  
1 Adjustable angle scissors set, with 4 spare blades

# LEDLINE AIR 1010 PRO WHT - COMBO SYSTEM

3D Bending · Static White

(Standard Cut + Free Cut Finishing Piece)

## Drivers

### Non-dimmable

Code	Max Load	Input	Output	Environment	Size (L x W x H)
ELG-150-24A-3Y	150W	100-305VAC	24V	Dry/Damp/IP67	219 * 63 * 35.5 mm
LRS-150-24	150W	85-132VAC / 170-264VAC	24V	Dry	159 * 97 * 30 mm

### 3 in 1-dimmable

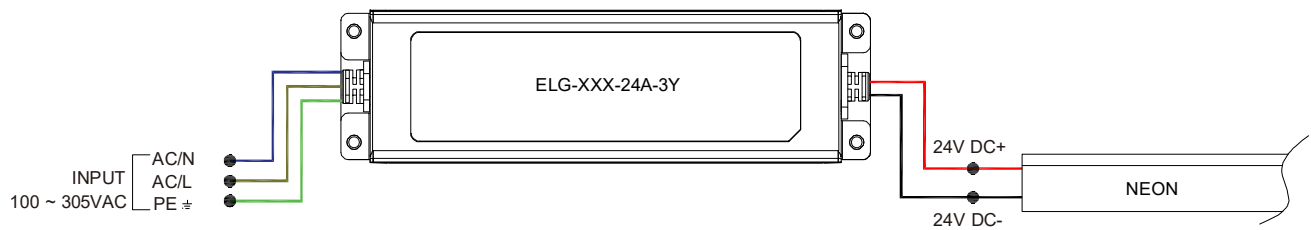
Code	Max Load	Input	Output	Environment	Size (L x W x H)
ELG-150-24B-3Y	150W	100-305VAC	24V	Dry/Damp/IP67	219 * 63 * 35.5 mm

### DALI-dimmable

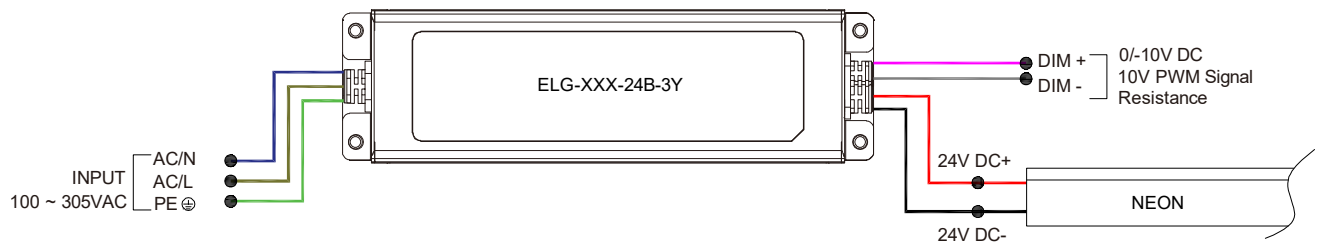
Code	Max Load	Input	Output	Environment	Size (L x W x H)
ELG-150-24DA-3Y	150W	100-305VAC	24V	Dry/Damp/IP67	219 * 63 * 35.5 mm

## Wiring Diagram

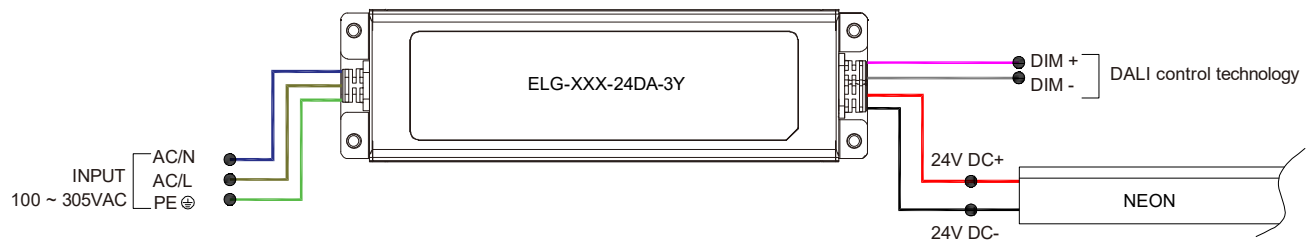
### Non-dimmable



### 3 in 1-dimmable



### DALI-dimmable



# LEDLINE AIR 1010 PRO WHT - COMBO SYSTEM

3D Bending · Static White

(Standard Cut + Free Cut Finishing Piece)

## 24V Voltage Drop & Maximum Wire Length Chart

Based on 24V voltage with a 3% voltage drop allowance. Indicates the maximum wire length from the power supply to the start of the run.

Total load	8AWG	10AWG	12AWG	14AWG	16AWG	18AWG	20AWG	22AWG
10W / 0.4A	484.0m	304.5m	191.4m	120.4m	75.5m	47.5m	29.8m	18.5m
20W / 0.8A	242.0m	152.1m	95.7m	60.0m	37.8m	23.7m	14.9m	9.1m
30W / 1.3A	161.2m	101.5m	63.7m	39.9m	24.9m	15.8m	9.7m	6.1m
40W / 1.7A	121.0m	75.9m	47.8m	29.8m	18.9m	11.8m	7.3m	4.5m
50W / 2.1A	96.6m	60.6m	38.1m	24.0m	14.9m	9.4m	5.7m	3.6m
60W / 2.5A	80.4m	50.6m	31.7m	19.8m	12.5m	7.9m	4.8m	3.0m
70W / 2.9A	68.8m	43.2m	27.1m	17.0m	10.6m	6.7m	4.2m	2.4m
80W / 3.3A	60.3m	37.8m	23.7m	14.9m	9.4m	5.7m	3.6m	2.1m
90W / 3.8A	53.6m	33.8m	21.0m	13.1m	8.2m	5.1m	3.0m	1.8m
100W / 4.2A	48.1m	30.1m	18.9m	11.8m	7.3m	4.5m	2.7m	1.8m
110W / 4.6A	43.8m	27.4m	17.3m	10.6m	6.7m	4.2m	2.7m	1.5m
120W / 5.0A	40.2m	25.3m	15.8m	9.7m	6.1m	3.9m	2.4m	1.5m
130W / 5.4A	37.1m	23.1m	14.6m	9.1m	5.7m	3.6m	2.1m	1.2m
140W / 5.8A	34.4m	21.6m	13.4m	8.5m	5.1m	3.3m	2.1m	1.2m
150W / 6.3A	32.0m	20.1m	12.5m	7.9m	4.8m	3.0m	1.8m	1.2m
160W / 6.7A	30.1m	18.9m	11.8m	7.3m	4.5m	2.7m	1.8m	0.9m
170W / 7.1A	28.3m	17.6m	10.9m	7.0m	4.2m	2.7m	1.5m	0.9m
180W / 7.5A	26.8m	16.7m	10.3m	6.7m	3.9m	2.4m	1.5m	0.9m
190W / 7.9A	25.3m	15.8m	10.0m	6.0m	3.9m	2.4m	1.5m	0.9m
200W / 8.3A	24.0m	14.9m	9.4m	5.7m	3.6m	2.1m	1.2m	0.9m
210W / 8.8A	22.8m	14.3m	8.8m	5.4m	3.3m	2.1m	1.2m	0.6m
220W / 9.2A	21.9m	13.7m	8.5m	5.4m	3.3m	2.1m	1.2m	0.6m
230W / 9.6A	21.0m	13.1m	8.2m	5.1m	3.0m	1.8m	1.2m	0.6m
240W / 10.0A	20.1m	12.5m	7.9m	4.8m	3.0m	1.8m	1.2m	0.6m
250W / 10.4A	19.2m	12.1m	7.6m	4.5m	2.7m	1.8m	0.9m	0.6m