

# LEDLINE AIR 1010 WHT - COMBO SYSTEM

3D Bending · Static White

(Standard Cut + Free Cut Finishing Piece)

## Features

The AIR Combo System combines standard cut and free cut capabilities to provide precise, made-to-order lengths, utilizing Standard Cuts for the majority of the runs, with Free Cuts reserved only for the finishing segments. This combo usage achieves cost savings of 20–40% versus using Free Cuts for the entire length. Both AIR Standard Cut and Free Cut maintain consistent binning and brightness.

## Applications

Living rooms, TV walls, feature walls, under-cabinet areas, staircases, ceiling coves, hallways, etc.

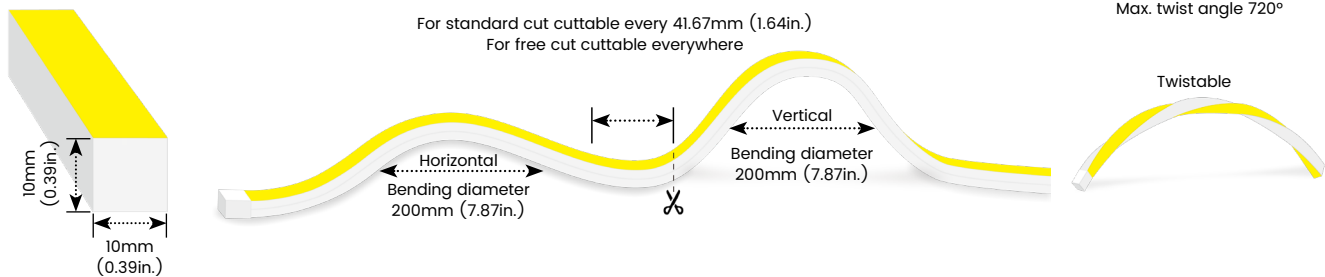
Date	Fixture type
Project name	Project phase



## Combo System



## Bending Directions & Diameters



## Order Code

## Assembly Builder

Model	Bend Direction	Voltage	CCT	Power	Left Feed Entry			
AIR1010	3D-3D bending	24V-DC24V	927-RA90 2700K	100-10W/M	F	Front	OW	Open wire 30cm(0.98ft)
	3DFC-3D bending Free Cut		930-RA90 3000K		B	Bottom	MC	Male connector with 30cm(0.98ft) cable
			940-RA90 4000K		S	Side	FC	Female connector with 30cm(0.98ft)cable
				C	Closed	NA	Only for Closed Feed Entry	

\*AIR1010FC: Free Cut delivers precise field-cut lengths for the last segment, while keeping in line with standard cut in dimensions, binning, output, and mounting for a uniform appearance.

## Assembly Builder

## Mounting Order Code

Right Feed Entry			Length	
F	Front	OW	Open wire 30cm(0.98ft)	Max. nominal 5m(16.4ft) AIR10103D
B	Bottom	MC	Male connector with 30cm(0.98ft) cable	Max. nominal 4m(13.12ft)AIR10103DFC
S	Side	FC	Female connector with 30cm(0.98ft)cable	Increment 41.67mm (1.64in.)
C	Closed	NA	Only for Closed Feed Entry	

Product Code  
Please select on the Mounting Options page

\*We will list the nearest actual manufacturing length on the quotation, based on your requested length.

# LEDLINE AIR 1010 WHT - COMBO SYSTEM

3D Bending · Static White

(Standard Cut + Free Cut Finishing Piece)

## Lumen Output (lm/m)

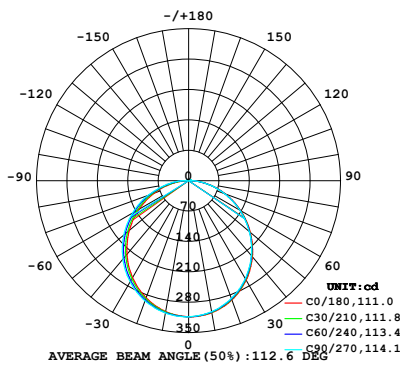
CCT	10W/M
■ 2700K	890
■ 3000K	930
■ 4000K	950
Max. Run for standard cut	5m
Max. run for Free cut	4m

## Technical Details

Efficacy	93lm/W @3000K 10W
CRI	Ra>90
Beam Angle	110°
LED MacAdam	3 step
IK Rating	IK07
Average Life (L80B50)	>44,000 hours
Storage Temperature	-40°C- 65°C
Operating Temperature	-40°C- 65°C

## Photometry

AIR10103D-24-930-100  
LEDLINE AIR 1010, 3D bending, 24V, RA90, 3000K, 10W/M



### Zonal Lumen Summary

Zone	Lumen	% Fixture
0-30	242.5	26.1%
0-40	396.6	42.7%
0-60	701.8	75.5%
0-90	912.9	98.2%
0-180	929.2	100.0%

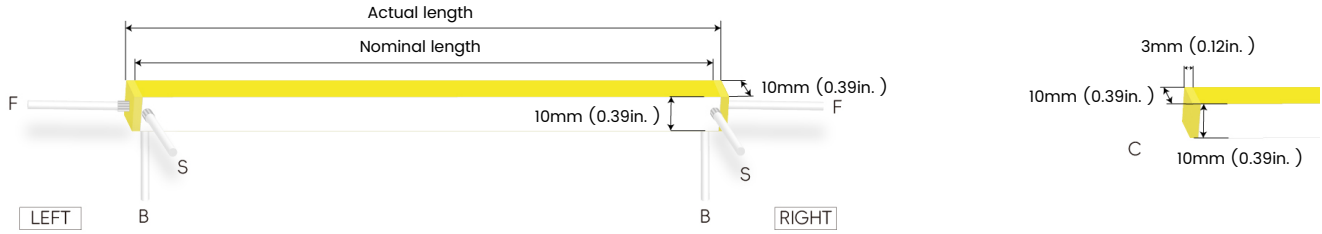
# LEDLINE AIR 1010 WHT - COMBO SYSTEM

(Standard Cut + Free Cut Finishing Piece)

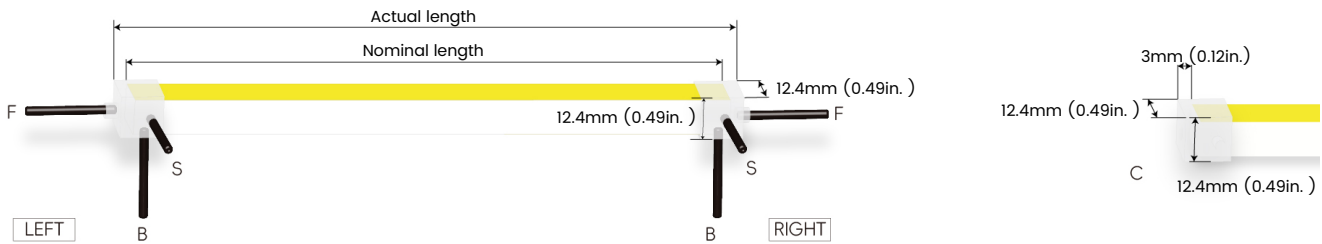
3D Bending · Static White

## Feed Entry / End Cap Options

### FT: Flush Translucent – IP67, factory-made only



### Silicone end cap – IP67, for field cuttable only



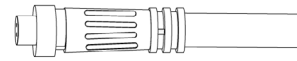
## Connector Wire Options



**OW:** Open wire, **Dry only**  
Standard 30cm (0.98ft), 20 AWG,  
wire length customizable



**MC:** Male connector, **Wet**  
Standard 30cm (0.98ft), 20 AWG



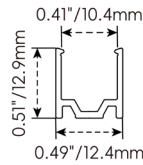
**FC:** Female connector, **Wet**  
Standard 30cm (0.98ft), 20 AWG

# LEDLINE AIR 1010 WHT - COMBO SYSTEM

(Standard Cut + Free Cut Finishing Piece)

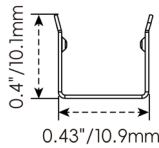
3D Bending · Static White

## Mounting Options



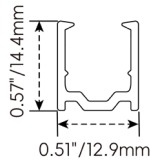
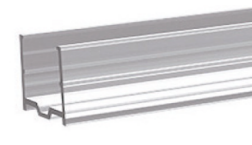
### AC023-AP

Name	Straight surface profile
Material	Aluminum
Standard Length	1M (3.28ft)



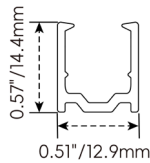
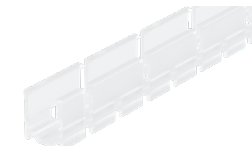
### AC023-CR

Name	Bendable surface profile
Material	Stainless Steel
Standard Length	500mm (1.64ft)
Min. Bend Diameter	100mm (3.94in.)
*Not suitable for upside-down installation	



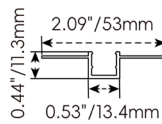
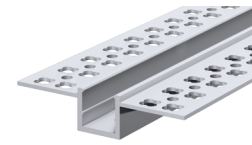
### AC023-PC

Name	PC profile
Material	PC
Standard Length	1M (3.28ft)



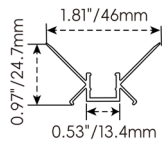
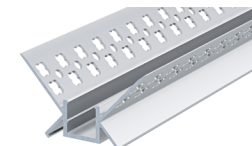
### AC023-CPC

Name	Bendable PC profile
Material	PC
Standard Length	1M (3.28ft)
Min. Bend Diameter	100mm (3.94in.)



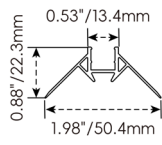
### AC023-LP

Name	Mud-in profile
Material	Aluminum
Standard Length	1M (3.28ft)



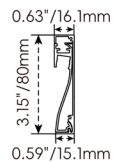
### AC023-ICP

Name	Inside corner profile
Material	Aluminum
Standard Length	1M (3.28ft)



### AC023-OCP

Name	Outside corner profile
Material	Aluminum
Standard Length	1M (3.28ft)



### AC023-SP

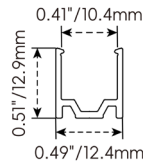
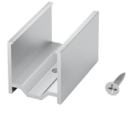
Name	Skirting board profile
Material	Aluminum
Standard Length	1M (3.28ft)

# LEDLINE AIR 1010 WHT - COMBO SYSTEM

3D Bending · Static White

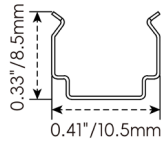
(Standard Cut + Free Cut Finishing Piece)

## Clip Options



### AC025-MC

Name	Mounting clip
Material	Aluminum
Standard Length	25mm (0.98in. )

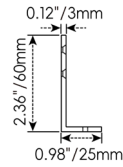


### AC025-SET

Name	Mounting clip
Material	Stainless Steel
Standard Length	7mm (0.28in. )

\*Not suitable for upside-down installation

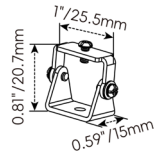
## Bracket Options



### AC167-SET-LA

Name	L-shaped mounting bracket
Material	Aluminum
Standard Length	20mm (0.79in.)

\* AC167-SET-LA must be installed with AC023-AP



### AC167-AMB

Name	Adjustable mounting clip
Material	Stainless steel
Standard Length	25.5mm (1 in.)

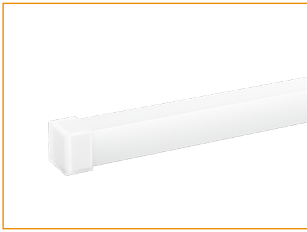
\* AC167-AMB must be installed with AC023-AP

## LEDLINE AIR 1010 WHT - COMBO SYSTEM

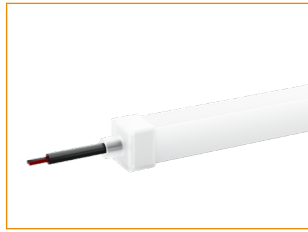
(Standard Cut + Free Cut Finishing Piece)

3D Bending · Static White

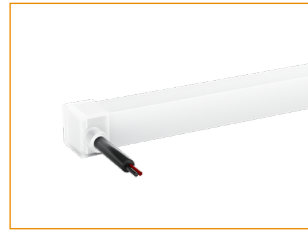
### Silicone End Caps (Optional, purchase for extra)



**AD025A**  
Silicone closed end cap



**AD025-2-F**  
Silicone end cap front entry with 30cm (0.98ft) cable, 2 pin



**AD025-2-S**  
Silicone end cap side entry with 30cm (0.98ft) cable, 2 pin



**AD025-2-B**  
Silicone end cap bottom entry with 30cm (0.98ft) cable, 2 pin

### Additional Accessories (Optional, purchase for extra)



**AD102-2-MCW**  
Male connector, 30cm (0.98ft) white cable, 2 pin, IP67, Wet, 20 AWG



**AD102-2-FCW**  
Female connector, 30cm (0.98ft) white cable, 2 pin, IP67, Wet, 20 AWG



**AD102-2-MCW**  
Male connector, 30cm (0.98ft) black cable, 2 pin, IP67, Wet, 20 AWG



**AD102-2-FCW**  
Female connector, 30cm (0.98ft) black cable, 2 pin, IP67, Wet, 20 AWG



**AF001-1**  
1 Adjustable angle scissors set, with 4 spare blades

# LEDLINE AIR 1010 WHT - COMBO SYSTEM

3D Bending · Static White

(Standard Cut + Free Cut Finishing Piece)

## Drivers

### Non-dimmable

Code	Max Load	Input	Output	Environment	Size (L x W x H)
ELG-150-24A-3Y	150W	100-305VAC	24V	Dry/Damp/IP67	219 * 63 * 35.5 mm
LRS-150-24	150W	85-132VAC / 170-264VAC	24V	Dry	159 * 97 * 30 mm

### 3 in 1-dimmable

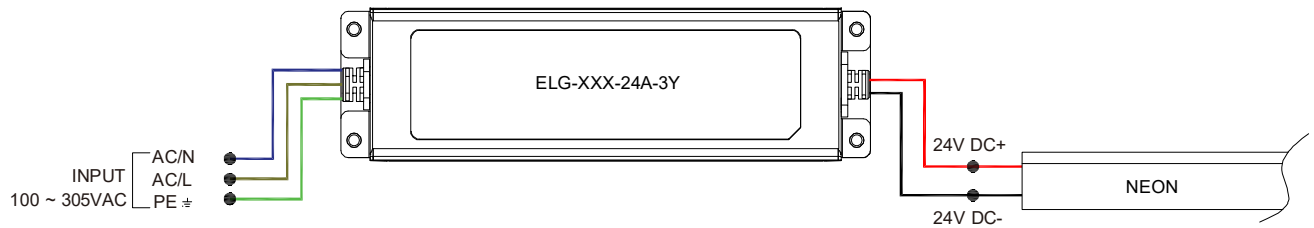
Code	Max Load	Input	Output	Environment	Size (L x W x H)
ELG-150-24B-3Y	150W	100-305VAC	24V	Dry/Damp/IP67	219 * 63 * 35.5 mm

### DALI-dimmable

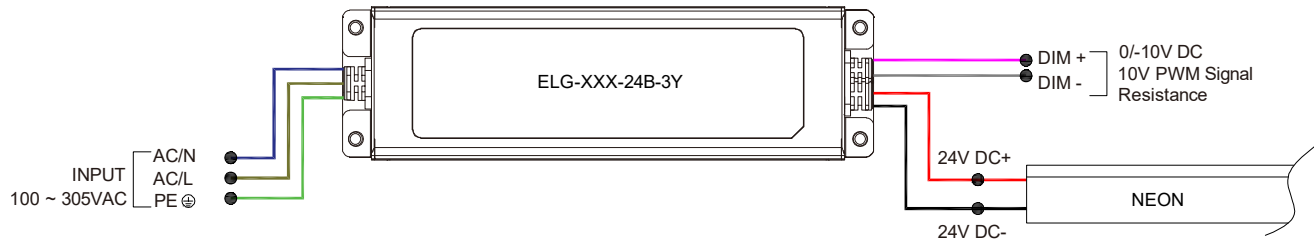
Code	Max Load	Input	Output	Environment	Size (L x W x H)
ELG-150-24DA-3Y	150W	100-305VAC	24V	Dry/Damp/IP67	219 * 63 * 35.5 mm

## Wiring Diagram

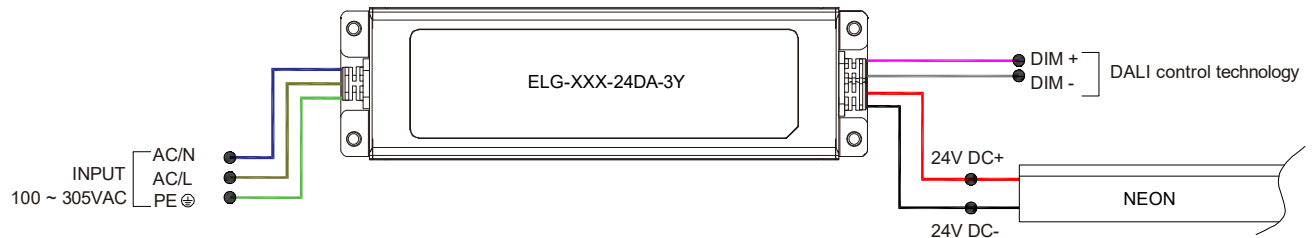
### Non-dimmable



### 3 in 1-dimmable



### DALI-dimmable



# LEDLINE AIR 1010 WHT - COMBO SYSTEM

3D Bending · Static White

(Standard Cut + Free Cut Finishing Piece)

## 24V Voltage Drop & Maximum Wire Length Chart

Based on 24V voltage with a 3% voltage drop allowance. Indicates the maximum wire length from the power supply to the start of the run.

Total load	8AWG	10AWG	12AWG	14AWG	16AWG	18AWG	20AWG	22AWG
10W / 0.4A	484.0m	304.5m	191.4m	120.4m	75.5m	47.5m	29.8m	18.5m
20W / 0.8A	242.0m	152.1m	95.7m	60.0m	37.8m	23.7m	14.9m	9.1m
30W / 1.3A	161.2m	101.5m	63.7m	39.9m	24.9m	15.8m	9.7m	6.1m
40W / 1.7A	121.0m	75.9m	47.8m	29.8m	18.9m	11.8m	7.3m	4.5m
50W / 2.1A	96.6m	60.6m	38.1m	24.0m	14.9m	9.4m	5.7m	3.6m
60W / 2.5A	80.4m	50.6m	31.7m	19.8m	12.5m	7.9m	4.8m	3.0m
70W / 2.9A	68.8m	43.2m	27.1m	17.0m	10.6m	6.7m	4.2m	2.4m
80W / 3.3A	60.3m	37.8m	23.7m	14.9m	9.4m	5.7m	3.6m	2.1m
90W / 3.8A	53.6m	33.8m	21.0m	13.1m	8.2m	5.1m	3.0m	1.8m
100W / 4.2A	48.1m	30.1m	18.9m	11.8m	7.3m	4.5m	2.7m	1.8m
110W / 4.6A	43.8m	27.4m	17.3m	10.6m	6.7m	4.2m	2.7m	1.5m
120W / 5.0A	40.2m	25.3m	15.8m	9.7m	6.1m	3.9m	2.4m	1.5m
130W / 5.4A	37.1m	23.1m	14.6m	9.1m	5.7m	3.6m	2.1m	1.2m
140W / 5.8A	34.4m	21.6m	13.4m	8.5m	5.1m	3.3m	2.1m	1.2m
150W / 6.3A	32.0m	20.1m	12.5m	7.9m	4.8m	3.0m	1.8m	1.2m
160W / 6.7A	30.1m	18.9m	11.8m	7.3m	4.5m	2.7m	1.8m	0.9m
170W / 7.1A	28.3m	17.6m	10.9m	7.0m	4.2m	2.7m	1.5m	0.9m
180W / 7.5A	26.8m	16.7m	10.3m	6.7m	3.9m	2.4m	1.5m	0.9m
190W / 7.9A	25.3m	15.8m	10.0m	6.0m	3.9m	2.4m	1.5m	0.9m
200W / 8.3A	24.0m	14.9m	9.4m	5.7m	3.6m	2.1m	1.2m	0.9m
210W / 8.8A	22.8m	14.3m	8.8m	5.4m	3.3m	2.1m	1.2m	0.6m
220W / 9.2A	21.9m	13.7m	8.5m	5.4m	3.3m	2.1m	1.2m	0.6m
230W / 9.6A	21.0m	13.1m	8.2m	5.1m	3.0m	1.8m	1.2m	0.6m
240W / 10.0A	20.1m	12.5m	7.9m	4.8m	3.0m	1.8m	1.2m	0.6m
250W / 10.4A	19.2m	12.1m	7.6m	4.5m	2.7m	1.8m	0.9m	0.6m