

Features

- 6mm square profile with high-efficiency light output
- IP65 rated, ideal for damp location and sheltered
- Freely cuttable, precisely trimmable for custom lengths
- 5 years warranty

Applications

Under cabinets, niches, shelves, closets, millwork, furnitures, etc.

Date

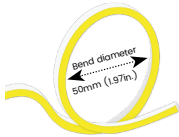
Fixture type

Project name

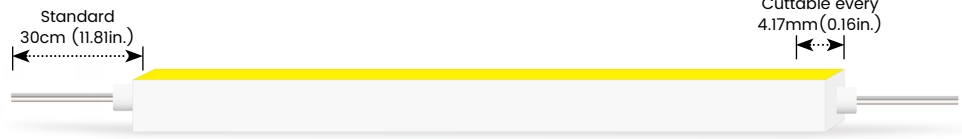
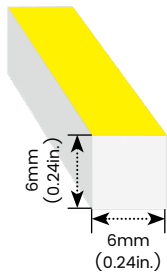
Project phase



Bending Directions & Diameters



Dimensions



Order Code

Assembly Builder

Model	Bend Direction	Function	Voltage	CCT	Power	Left Feed Entry	
ACE0606	S-Side bending	FC-Free Cut	24V-DC24V	927-RA90 2700K	060-6W/M	F Front	OW Open wire 30cm(0.98ft)
				930-RA90 3000K		B Bottom (Silicone only)	MC Male connector with 20cm(0.66ft) cable
				940-RA90 4000K		S Side (Silicone only)	FC Female connector with 20cm(0.66ft)cable
						C Closed	NA Only for Closed Feed Entry

Assembly Builder

Mounting Order Code

Right Feed Entry		Length
F Front	OW Open wire 30cm(0.98ft)	Max. nominal 5m(16.4ft)
B Bottom (Silicone only)	MC Male connector with 20cm(0.66ft) cable	Increment 4.17mm(0.16in.)
S Side (Silicone only)	FC Female connector with 20cm(0.66ft) cable	
C Closed	NA Only for Closed Feed Entry	

Product Code
Please select on the Mounting Options page

*We will list the nearest actual manufacturing length on the quotation, based on your requested length.

LEDLINE ACE 0606S FC WHT

Side Bending · Static White

Lumen Output (lm/m)

CCT	6W/M
■ 2700K	300
■ 3000K	309
■ 4000K	324
Max. Run Length	5m

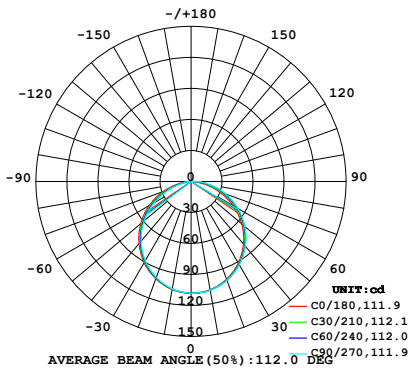
Technical Details

Efficacy	51.5lm/W @3000K 6W
CRI	Ra>90
LED MacAdam	3 steps
IK Rating	IK07
Average Life (L80B10)	>47,000~ hours
Storage Temperature	-40°C ~ 60°C
Operating Temperature	-40°C ~ 55°C

Photometry

ACE0606SFC-24-930-060

LEDLINE ACE 0606S FC, Side Bend, Free Cut, 24V, RA90, 3000K, 6W/M

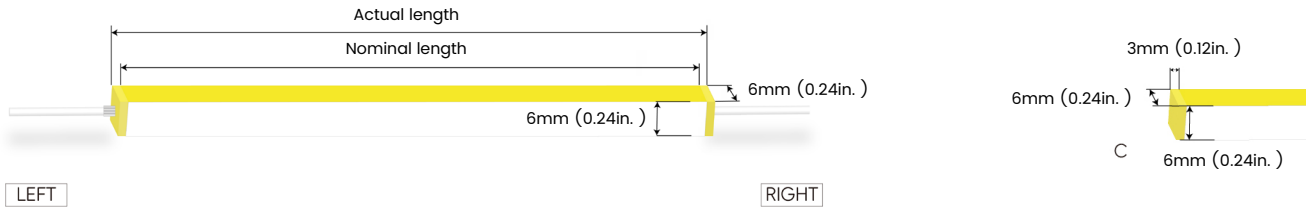


Zonal Lumen Summary

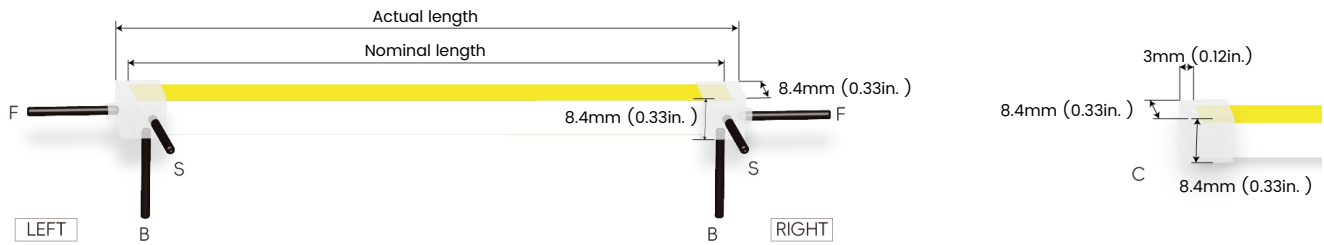
Zone	Lumen	% Fixture
0-30	83.86	27.1%
0-40	137	44.4%
0-60	241.8	78.3%
0-90	306.6	99.3%
0-180	308.8	100.0%

Feed Entry / End Cap Options

FT: Flush Translucent – IP54, factory-made only



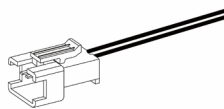
Silicone end cap – IP65, for field cuttable only



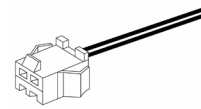
Connector Wire Options



OW: Open wire, **Dry only**
Standard 30cm(0.98ft), 24 AWG,
wire length customizable

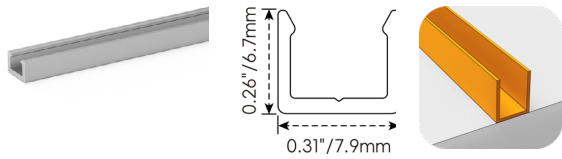


MC: Male connector, **Dry**
Standard 20cm(0.66ft), 24 AWG



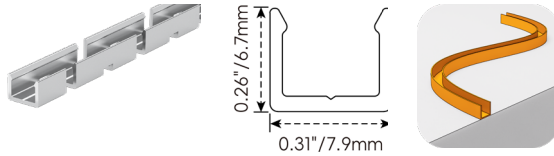
FC: Female connector, **Dry**
Standard 20cm(0.66ft), 24 AWG

Mounting Options



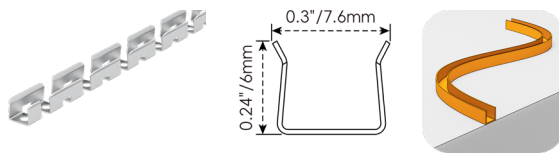
AC020-AP

Name	Straight surface profile
Material	Aluminum
Standard Length	1M (3.28ft)



AC020-CR

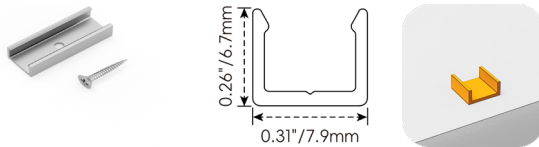
Name	Bendable surface profile
Material	Aluminum
Standard Length	1M (3.28ft)
Min. Bend Diameter	300mm(11.81in.)



AC020-SP

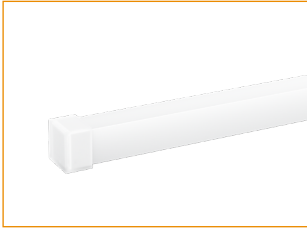
Name	Bendable surface profile
Material	Stainless Steel
Standard Length	500mm (1.64ft)
Min. Bend Diameter	50mm(1.97in.)

Clip Options

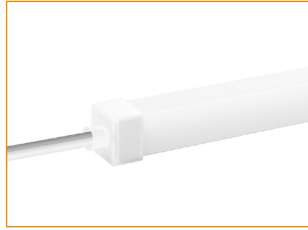


AC021-SET

Name	Mounting clip
Material	Aluminum
Standard Length	25mm(0.98in.)

Silicone End Caps (Optional, purchase for extra)

AD013
Silicone closed end cap



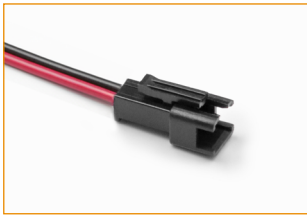
AD012-F
Silicone end cap front entry with
30cm(0.98ft) cable, 2 pin



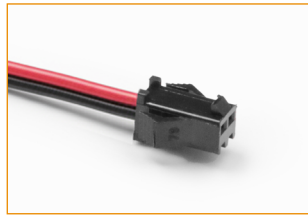
AD012-S
Silicone end cap side entry with
30cm(0.98ft) cable, 2 pin



AD012-B
Silicone end cap bottom entry with
30cm(0.98ft) cable, 2 pin

Additional Accessories (Optional, purchase for extra)

AD00J-2-MC
Male connector,
20cm (0.66ft) red&black cable,
2 pin, IP20, 24 AWG



AD00J-2-FC
Female connector,
20cm (0.66ft) red&black cable,
2 pin, IP20, 24 AWG



AF001-1
1 Adjustable angle scissors set,
with 4 spare blades

Drivers

Non-dimmable

Code	Max Load	Input	Output	Environment	Size (L x W x H)
ELG-150-24A-3Y	150W	100-305VAC	24V	Dry/Damp/IP67	219 * 63 * 35.5 mm
LRS-150-24	150W	85-132VAC / 170-264VAC	24V	Dry	159 * 97 * 30 mm

3 in 1-dimmable

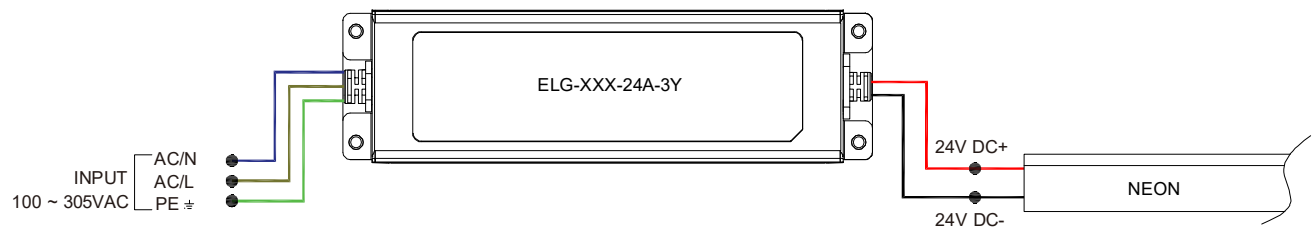
Code	Max Load	Input	Output	Environment	Size (L x W x H)
ELG-150-24B-3Y	150W	100-305VAC	24V	Dry/Damp/IP67	219 * 63 * 35.5 mm

DALI-dimmable

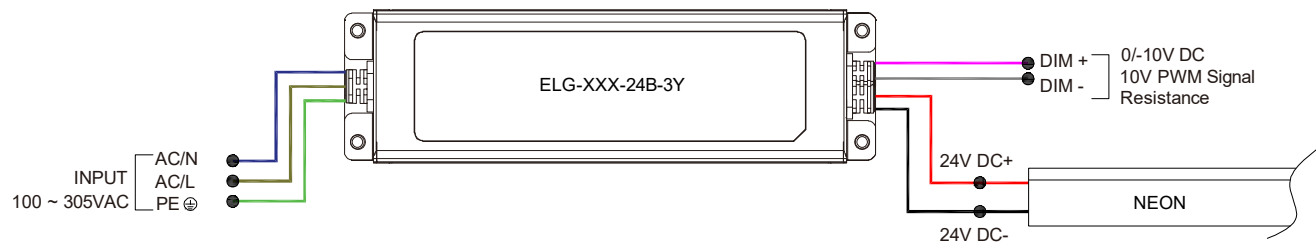
Code	Max Load	Input	Output	Environment	Size (L x W x H)
ELG-150-24DA-3Y	150W	100-305VAC	24V	Dry/Damp/IP67	219 * 63 * 35.5 mm

Wiring Diagram

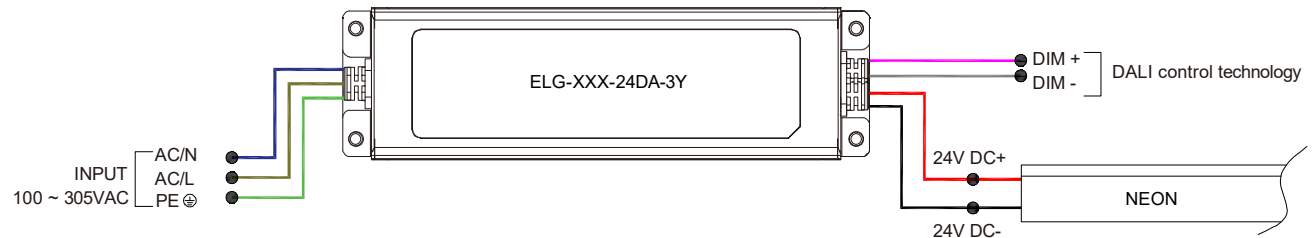
Non-dimmable



3 in 1-dimmable



DALI-dimmable



LEDLINE ACE 0606S FC WHT

Side Bending · Static White

24V Voltage Drop & Maximum Wire Length Chart

Based on 24V voltage with a 3% voltage drop allowance. Indicates the maximum wire length from the power supply to the start of the run.

Total load	8AWG	10AWG	12AWG	14AWG	16AWG	18AWG	20AWG	22AWG
10W / 0.4A	484.0m	304.5m	191.4m	120.4m	75.5m	47.5m	29.8m	18.5m
20W / 0.8A	242.0m	152.1m	95.7m	60.0m	37.8m	23.7m	14.9m	9.1m
30W / 1.3A	161.2m	101.5m	63.7m	39.9m	24.9m	15.8m	9.7m	6.1m
40W / 1.7A	121.0m	75.9m	47.8m	29.8m	18.9m	11.8m	7.3m	4.5m
50W / 2.1A	96.6m	60.6m	38.1m	24.0m	14.9m	9.4m	5.7m	3.6m
60W / 2.5A	80.4m	50.6m	31.7m	19.8m	12.5m	7.9m	4.8m	3.0m
70W / 2.9A	68.8m	43.2m	27.1m	17.0m	10.6m	6.7m	4.2m	2.4m
80W / 3.3A	60.3m	37.8m	23.7m	14.9m	9.4m	5.7m	3.6m	2.1m
90W / 3.8A	53.6m	33.8m	21.0m	13.1m	8.2m	5.1m	3.0m	1.8m
100W / 4.2A	48.1m	30.1m	18.9m	11.8m	7.3m	4.5m	2.7m	1.8m
110W / 4.6A	43.8m	27.4m	17.3m	10.6m	6.7m	4.2m	2.7m	1.5m
120W / 5.0A	40.2m	25.3m	15.8m	9.7m	6.1m	3.9m	2.4m	1.5m
130W / 5.4A	37.1m	23.1m	14.6m	9.1m	5.7m	3.6m	2.1m	1.2m
140W / 5.8A	34.4m	21.6m	13.4m	8.5m	5.1m	3.3m	2.1m	1.2m
150W / 6.3A	32.0m	20.1m	12.5m	7.9m	4.8m	3.0m	1.8m	1.2m
160W / 6.7A	30.1m	18.9m	11.8m	7.3m	4.5m	2.7m	1.8m	0.9m
170W / 7.1A	28.3m	17.6m	10.9m	7.0m	4.2m	2.7m	1.5m	0.9m
180W / 7.5A	26.8m	16.7m	10.3m	6.7m	3.9m	2.4m	1.5m	0.9m
190W / 7.9A	25.3m	15.8m	10.0m	6.0m	3.9m	2.4m	1.5m	0.9m
200W / 8.3A	24.0m	14.9m	9.4m	5.7m	3.6m	2.1m	1.2m	0.9m
210W / 8.8A	22.8m	14.3m	8.8m	5.4m	3.3m	2.1m	1.2m	0.6m
220W / 9.2A	21.9m	13.7m	8.5m	5.4m	3.3m	2.1m	1.2m	0.6m
230W / 9.6A	21.0m	13.1m	8.2m	5.1m	3.0m	1.8m	1.2m	0.6m
240W / 10.0A	20.1m	12.5m	7.9m	4.8m	3.0m	1.8m	1.2m	0.6m
250W / 10.4A	19.2m	12.1m	7.6m	4.5m	2.7m	1.8m	0.9m	0.6m