

LEDLINE AG 1617S WHT

Outdoor · Side Bending

Features

- UGR<19 creates soft lighting for ultimate eye comfort
- IP68 rated, ideal for outdoor uses, not for underwater project
- 5 years warranty

Applications

Hotels, offices, schools, libraries, clubs, lobbies, etc.

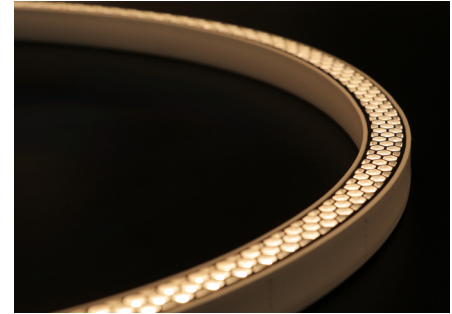
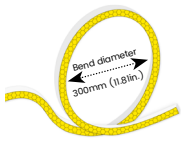
Date

Fixture type

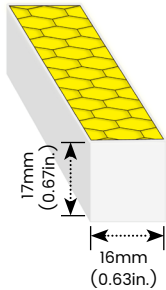
Project name

Project phase

Bending Directions & Diameters



Dimensions



Order Code

Assembly Builder

Model	Bend Direction	Voltage	CCT	Power	Left Feed Entry			
AG1617	S-Side bending	24V-DC24V	927-RA90 2700K	096-9.6W/M	F	Front	OW	Open wire 30cm(0.98ft)
			930-RA90 3000K		B	Bottom	MC	Male connector with 30cm(0.98ft) cable
			940-RA90 4000K		S	Side	FC	Female connector with 30cm(0.98ft) cable
					C	Closed	NA	Only for Closed Feed Entry

Assembly Builder

Mounting Order Code

Right Feed Entry				Length	
F	Front	OW	Open wire 30cm(0.98ft)	Max. nominal Increment	20m (65.6ft)
B	Bottom	MC	Male connector with 30cm(0.98ft) cable		50mm(1.97in.)
S	Side	FC	Female connector with 30cm(0.98ft) cable		
C	Closed	NA	Only for Closed Feed Entry		

Product Code
Please select on the Mounting Options page

*We will list the nearest actual manufacturing length on the quotation, based on your requested length.

LEDLINE AG 1617S WHT

Outdoor · Side Bending

Lumen Output (lm/m)

CCT	Side Bending
	9.6W/M
■ 2700K	152
■ 3000K	169
■ 4000K	167
Max. Run Length	20m (65.6ft)

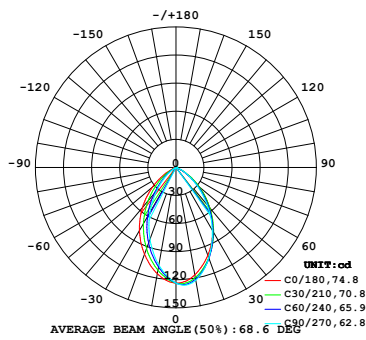
Technical Details

Parameter	Side Bending
Efficacy	17.3lm/W @3000K 9.6W
CRI	Ra>90
Beam Angle	68°
UGR	<19
LED MacAdam	3 steps
Average Life (L80B10)	>47,000 hours
Storage Temperature	-40°C~ 65°C
Operating Temperature	-40°C~ 65°C

Photometry

AG1617S-24-930-096

LEDLINE AG 1617S, Side bend, 24V, RA90, 3000K, 9.6W/M



Zonal Lumen Summary

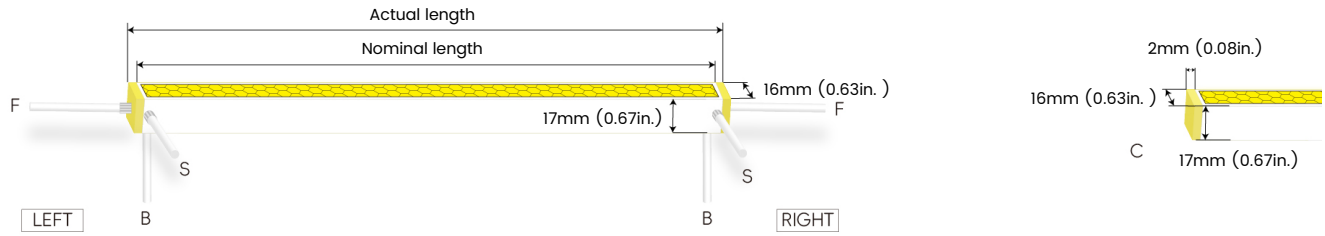
Zone	Lumen	% Fixture
0-30	79.9	47.4%
0-40	117.7	69.8%
0-60	161.2	95.6%
0-90	167.1	99.1%
0-180	168.6	100.0%

LEDLINE AG 1617S WHT

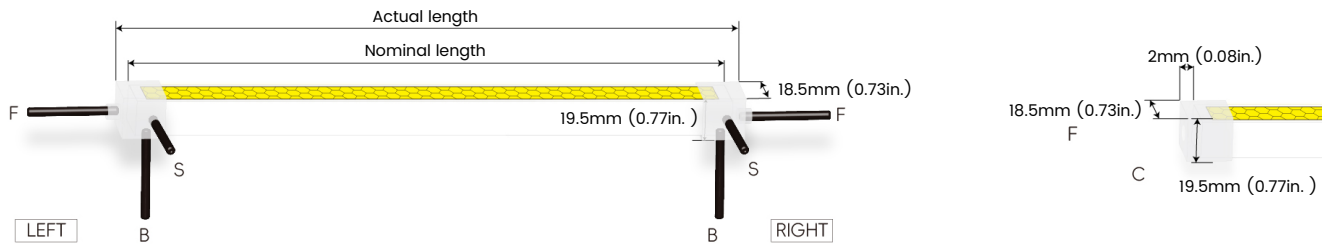
Outdoor · Side Bending

Feed Entry / End Cap Options

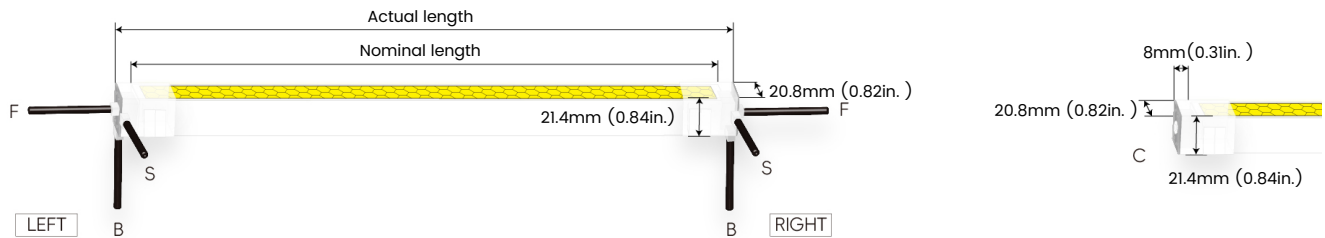
FT: Flush Translucent – IP68, factory-made only



Silicone end cap – IP67, for field cuttable only



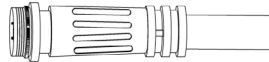
DIY end cap with screws – IP67, for field cuttable only



Connector Wire Options



OW: Open wire, Dry only
Standard 30cm (0.98ft) ,18 AWG,
wire length customizable



OW: Open wire, Dry only
Standard 30cm (0.98ft) ,18 AWG

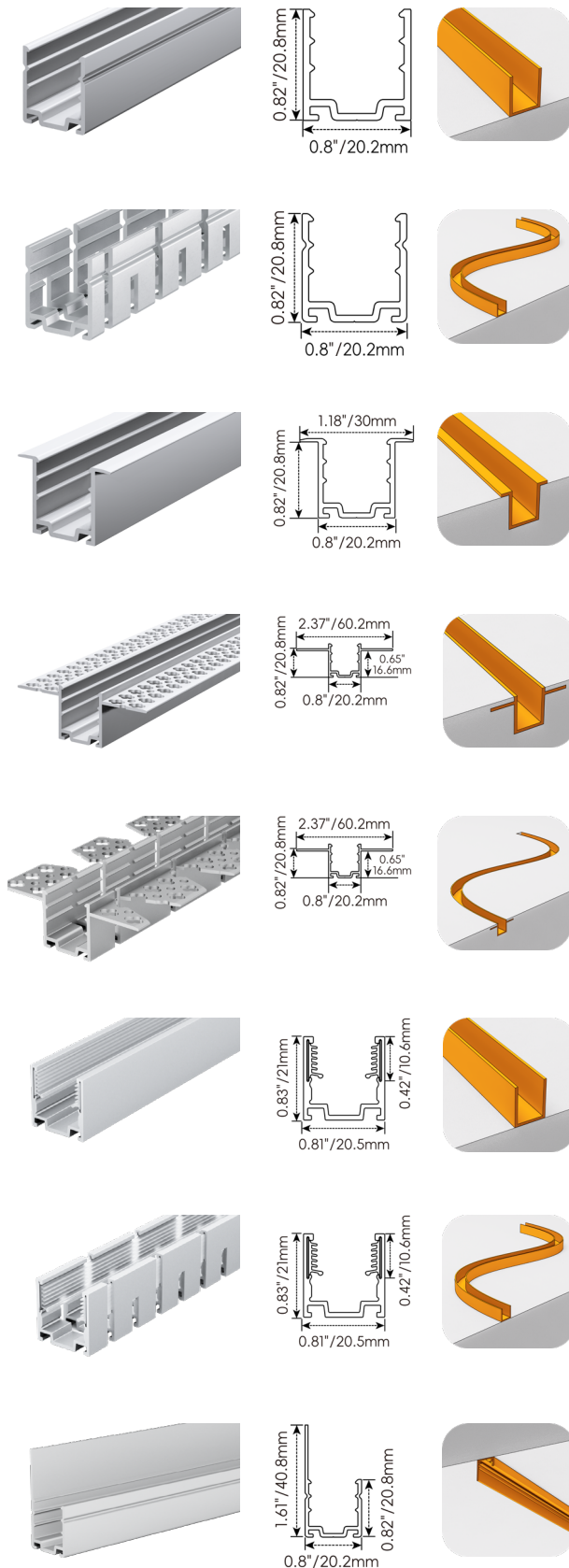


OW: Open wire, Dry only
Standard 30cm (0.98ft) ,18 AWG

LEDLINE AG 1617S WHT

Outdoor · Side Bending

Mounting Options



AC167-AP

Name	Straight surface profile
Material	Aluminum
Standard Length	1M (3.28ft)

AC167-CR

Name	Bendable surface profile
Material	Aluminum
Standard Length	1M (3.28ft)
Min. Bending Diameter	600mm (23.6in.)

AC167-EP

Name	Straight recessed profile
Material	Aluminum
Standard Length	1M (3.28ft)

AC167-LP

Name	Mud-in profile
Material	Aluminum
Standard Length	1M (3.28ft)

AC167-SCRL

Name	Bendable mud-in profile
Material	Aluminum
Standard Length	1M (3.28ft)
Min. Bending Diameter	600mm (23.6in.)

AC167-SGP

Name	Straight surface profile
Material	Aluminum with silicone groove
Standard Length	1M (3.28ft)

AC167-CSGP

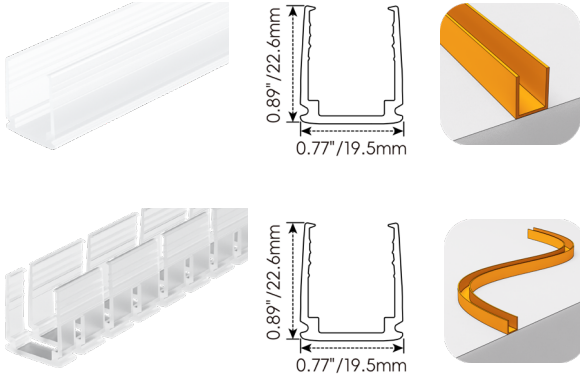
Name	Bendable surface profile
Material	Aluminum with silicone groove
Standard Length	1M (3.28ft)
Min. Bending Diameter	600mm (23.6in.) only side bend

AC167-BA

Name	Light-block profile
Material	Aluminum
Standard Length	1M (3.28ft)

LEDLINE AG 1617S WHT

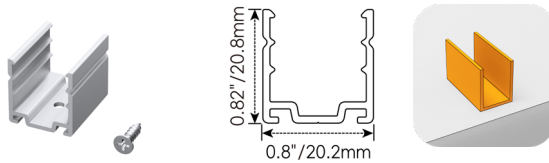
Outdoor · Side Bending



AC167-PC	
Name	PC profile
Material	Polycarbonate
Standard Length	1M (3.28ft)

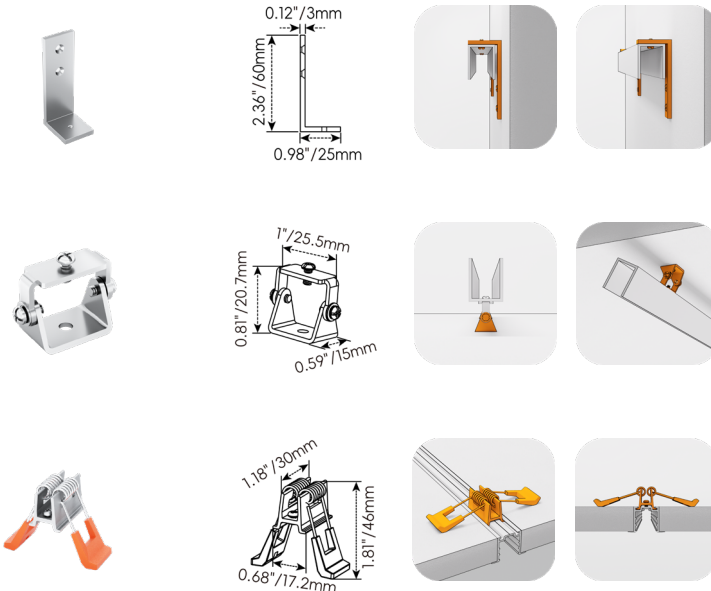
AC167-CPC	
Name	Bendable PC profile
Material	Polycarbonate
Standard Length	1M (3.28ft)
Min. Bending Diameter	300mm (11.8in.)

Clip Options



AC167-MC	
Name	Mounting clip
Material	Aluminum
Standard Length	25mm (0.98in.)

Bracket Options

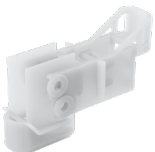


AC167-SET-LA	
Name	L-shaped mounting bracket
Material	Aluminum
Standard Length	20mm (0.79in.)
* AC167-SET-LA must be installed with AC167-AP	

AC167-AMB	
Name	Adjustable mounting clip
Material	Stainless steel
Standard Length	25.5mm (1 in.)
* AC167-AMB must be installed with AC167-AP	

AC167-SET-LC	
Name	Spring clip
Standard Pkg	1pcs
* AC167-SET-LC must be installed with AC167-EP	

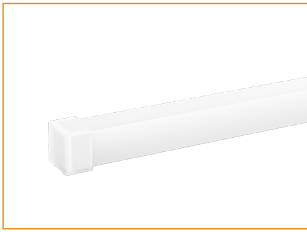
Tool Options



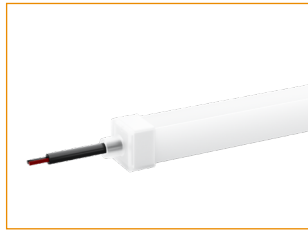
IF-167	
Name	Fixture
Material	Resin
Standard Pkg	1pcs
* Insertion Fixture for AC167-CPC	

LEDLINE AG 1617S WHT

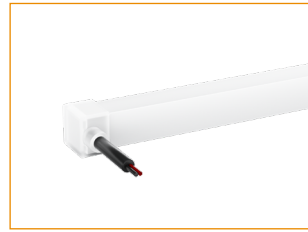
Silicone End Caps (Optional, purchase for extra)



AC167-EC
Silicone closed end cap



AC167-EC2-F
Silicone end cap front entry with 30cm(0.98ft) cable, 2 pin



AC167-EC2-S
Silicone end cap side entry with 30cm(0.98ft) cable, 2 pin

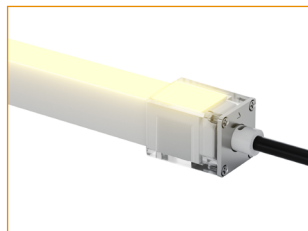


AC167-EC2-B
Silicone end cap bottom entry with 30cm(0.98ft) cable, 2 pin

DIY End Caps (Optional, purchase for extra)



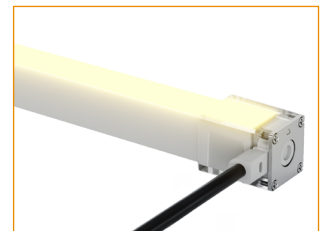
1617S-WS-C-2P-F/L-30
DIY end cap with screws, left front entry, 30cm (0.98ft) cable, 2 pin, IP67



1617S-WS-C-2P-F/R-30
DIY end cap with screws, right front entry, 30cm (0.98ft) cable, 2 pin, IP67



1617S-WS-C-2P-S/L-30
DIY end cap with screws, left side entry, 30cm (0.98ft) cable, 2 pin, IP67



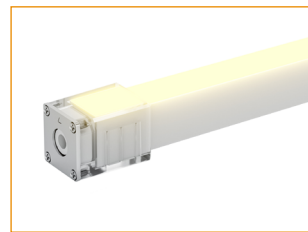
1617S-WS-C-2P-S/R-30
DIY end cap with screws, right side entry, 30cm (0.98ft) cable, 2 pin, IP67



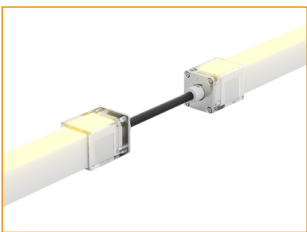
1617S-WS-C-2P-B/L-30
DIY end cap with screws, left bottom entry, 30cm (0.98ft) cable, 2 pin, IP67



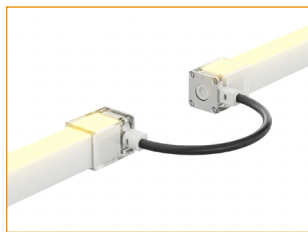
1617S-WS-C-2P-B/R-30
DIY end cap with screws, right bottom entry, 30cm (0.98ft) cable, 2 pin, IP67



1617S-WS
DIY closed end cap with screws, IP67



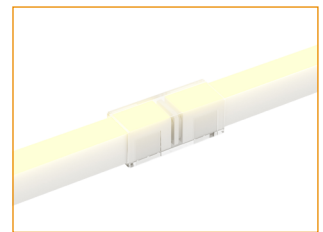
1617S-WS-J-2P-F/LR-15
Jumper connector front entry, 15cm (0.49ft) cable, 2 pin, IP67



1617S-WS-J-2P-S/LR-15
Jumper connector side entry, 15cm (0.49ft) cable, 2 pin, IP67



1617S-WS-J-2P-B/LR-15
Jumper connector bottom entry, 15cm (0.49ft) cable, 2 pin, IP67



1617S-NS-J-2P
Strip to strip connector, 2 pin, IP54

LEDLINE AG 1617S WHT

Outdoor · Side Bending

Additional Accessories (Optional, purchase for extra)



AD007-2-MCW
Male connector,
30cm (0.98ft) UL white cable,
2 pin, IP67, Wet, 18 AWG



AD007-2-FCW
Female connector,
30cm (0.98ft) UL white cable,
2 pin, IP67, Wet, 18 AWG



AD007-2-MCB
Male connector,
30cm (0.98ft) black cable,
2 pin, IP67, Wet, 18 AWG



AD007-2-FCB
Female connector,
30cm (0.98ft) black cable,
2 pin, IP67, Wet, 18 AWG



AF001-1
1 Adjustable angle scissors set,
with 4 spare blades

LEDLINE AG 1617S WHT

Outdoor · Side Bending

Drivers

Non-dimmable

Code	Max Load	Input	Output	Environment	Size (L x W x H)
ELG-150-24A-3Y	150W	100-305VAC	24V	Dry/Damp/IP67	219 * 63 * 35.5 mm
LRS-150-24	150W	85-132VAC / 170-264VAC	24V	Dry	159 * 97 * 30 mm

3 in 1-dimmable

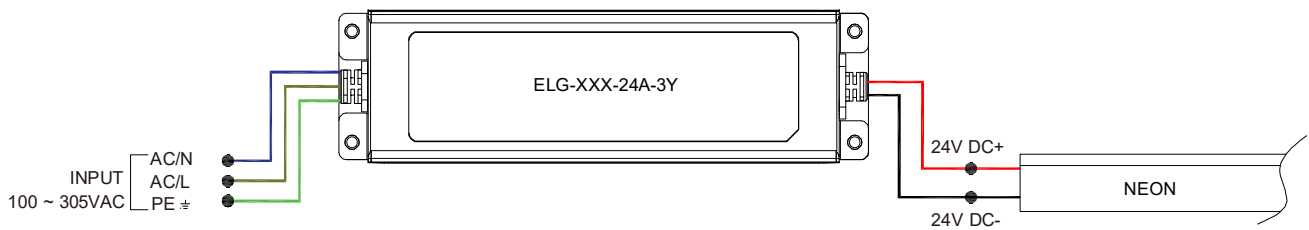
Code	Max Load	Input	Output	Environment	Size (L x W x H)
ELG-150-24B-3Y	150W	100-305VAC	24V	Dry/Damp/IP67	219 * 63 * 35.5 mm

DALI-dimmable

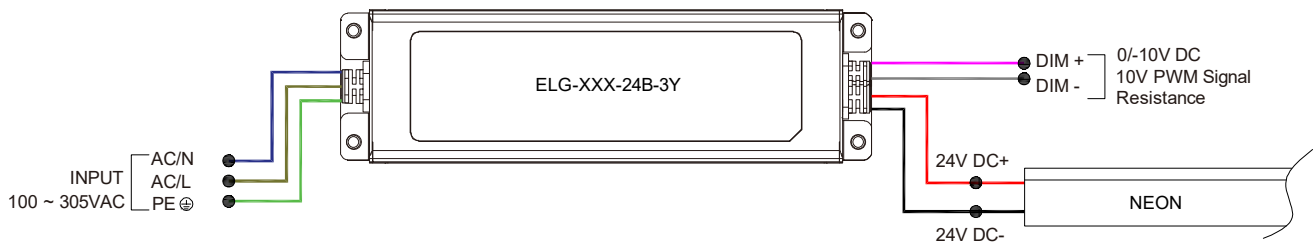
Code	Max Load	Input	Output	Environment	Size (L x W x H)
ELG-150-24DA-3Y	150W	100-305VAC	24V	Dry/Damp/IP67	219 * 63 * 35.5 mm

Wiring Diagram

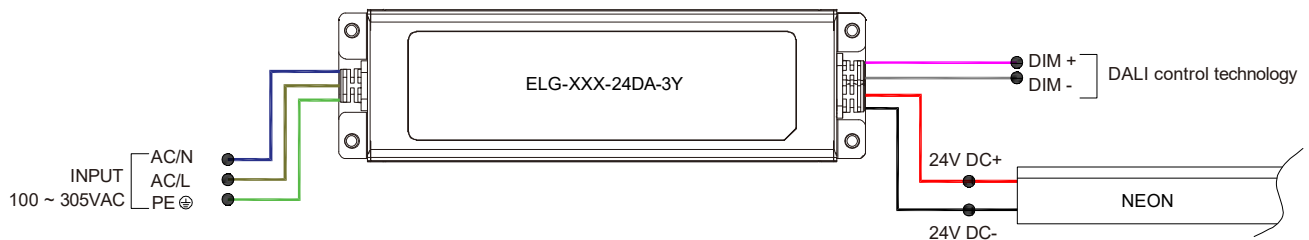
Non-dimmable



3 in 1-dimmable



DALI-dimmable



LEDLINE AG 1617S WHT

Outdoor · Side Bending

24V Voltage Drop & Maximum Wire Length Chart

Based on 24V voltage with a 3% voltage drop allowance. Indicates the maximum wire length from the power supply to the start of the run.

Total load	8AWG	10AWG	12AWG	14AWG	16AWG	18AWG	20AWG	22AWG
10W / 0.4A	484.0m	304.5m	191.4m	120.4m	75.5m	47.5m	29.8m	18.5m
20W / 0.8A	242.0m	152.1m	95.7m	60.0m	37.8m	23.7m	14.9m	9.1m
30W / 1.3A	161.2m	101.5m	63.7m	39.9m	24.9m	15.8m	9.7m	6.1m
40W / 1.7A	121.0m	75.9m	47.8m	29.8m	18.9m	11.8m	7.3m	4.5m
50W / 2.1A	96.6m	60.6m	38.1m	24.0m	14.9m	9.4m	5.7m	3.6m
60W / 2.5A	80.4m	50.6m	31.7m	19.8m	12.5m	7.9m	4.8m	3.0m
70W / 2.9A	68.8m	43.2m	27.1m	17.0m	10.6m	6.7m	4.2m	2.4m
80W / 3.3A	60.3m	37.8m	23.7m	14.9m	9.4m	5.7m	3.6m	2.1m
90W / 3.8A	53.6m	33.8m	21.0m	13.1m	8.2m	5.1m	3.0m	1.8m
100W / 4.2A	48.1m	30.1m	18.9m	11.8m	7.3m	4.5m	2.7m	1.8m
110W / 4.6A	43.8m	27.4m	17.3m	10.6m	6.7m	4.2m	2.7m	1.5m
120W / 5.0A	40.2m	25.3m	15.8m	9.7m	6.1m	3.9m	2.4m	1.5m
130W / 5.4A	37.1m	23.1m	14.6m	9.1m	5.7m	3.6m	2.1m	1.2m
140W / 5.8A	34.4m	21.6m	13.4m	8.5m	5.1m	3.3m	2.1m	1.2m
150W / 6.3A	32.0m	20.1m	12.5m	7.9m	4.8m	3.0m	1.8m	1.2m
160W / 6.7A	30.1m	18.9m	11.8m	7.3m	4.5m	2.7m	1.8m	0.9m
170W / 7.1A	28.3m	17.6m	10.9m	7.0m	4.2m	2.7m	1.5m	0.9m
180W / 7.5A	26.8m	16.7m	10.3m	6.7m	3.9m	2.4m	1.5m	0.9m
190W / 7.9A	25.3m	15.8m	10.0m	6.0m	3.9m	2.4m	1.5m	0.9m
200W / 8.3A	24.0m	14.9m	9.4m	5.7m	3.6m	2.1m	1.2m	0.9m
210W / 8.8A	22.8m	14.3m	8.8m	5.4m	3.3m	2.1m	1.2m	0.6m
220W / 9.2A	21.9m	13.7m	8.5m	5.4m	3.3m	2.1m	1.2m	0.6m
230W / 9.6A	21.0m	13.1m	8.2m	5.1m	3.0m	1.8m	1.2m	0.6m
240W / 10.0A	20.1m	12.5m	7.9m	4.8m	3.0m	1.8m	1.2m	0.6m
250W / 10.4A	19.2m	12.1m	7.6m	4.5m	2.7m	1.8m	0.9m	0.6m