

Features

- 4mm wide, slim yet energy-efficient for tight-space accent
- IP65 rated, ideal for damp location and sheltered exterior
- Freely cuttable, precisely trimmable for custom lengths
- 5 years warranty

Applications

Under cabinets, niches, shelves, closets, millwork, furnitures, etc.

Date

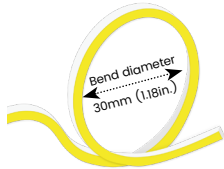
Fixture type

Project name

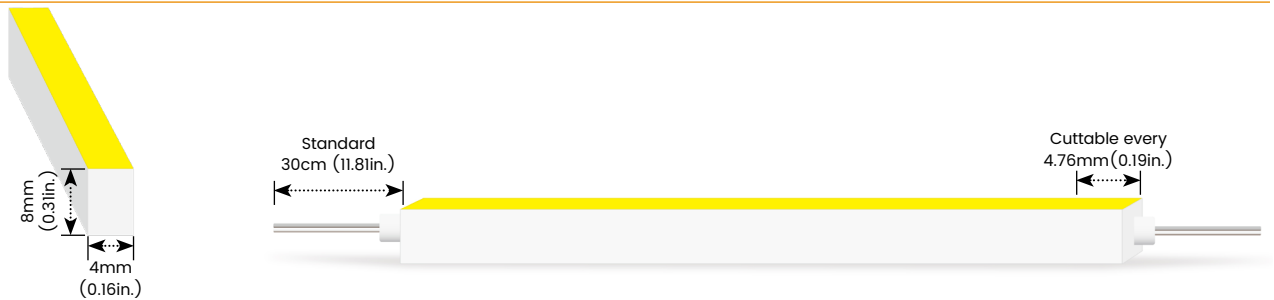
Project phase



Bending Directions & Diameters



Dimensions



Order Code

Assembly Builder

Model	Bend Direction	Function	Voltage	CCT	Power	Left Feed Entry	
ACE0408	S-Side bending	FC-Free Cut	24V-DC24V	927-RA90 2700K 930-RA90 3000K 940-RA90 4000K	060-6W/M	F Front C Closed	OW Open wire 30cm(0.98ft) MC Male connector with 20cm(0.66ft) cable FC Female connector with 20cm(0.66ft)cable NA Only for Closed Feed Entry

Assembly Builder

Mounting Order Code

Right Feed Entry			Length	
F Front	OW	Open wire 30cm(0.98ft)	Max. nominal	7m (22.97ft)
C Closed	MC	Male connector with 20cm(0.66ft) cable	Increment	4.76mm (0.19in.)
	FC	Female connector with 20cm(0.66ft)cable		
	NA	Only for Closed Feed Entry		

Product Code
Please select on the Mounting Options page

*We will list the nearest actual manufacturing length on the quotation, based on your requested length.

LEDLINE ACE 0408S FC WHT

Sidel Bending · Static White

Lumen Output (lm/m)

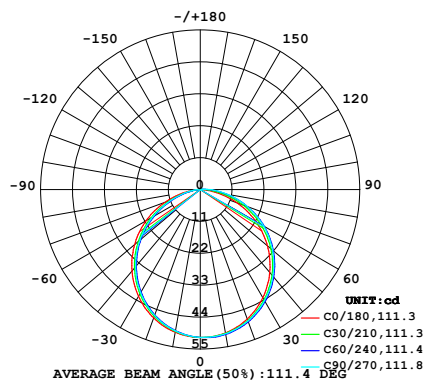
CCT	6W/M
2700K	140
3000K	145
4000K	159
Max. Run Length	7m

Technical Details

Efficacy	24.2lm/W @3000K 6W
CRI	Ra>90
LED MacAdam	3 steps
IK Rating	IK07 (With Aluminium Profile)
Average Life (L80B10)	>47,000 hours
Storage Temperature	-40°C ~ 60°C
Operating Temperature	-40°C ~ 55°C

Photometry

ACE0408SFC-24-930-060
 LEDLINE ACE 0408S FC, Side Bend, Free Cut, 24V, RA90, 3000K, 6W/M

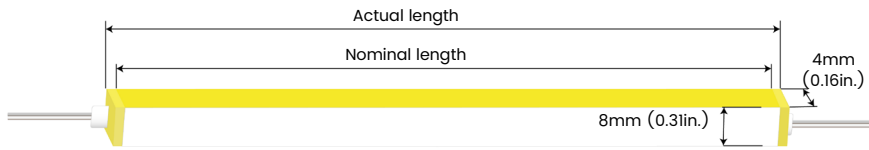


Zonal Lumen Summary

Zone	Lumen	% Fixture
0-30	39.42	27.2%
0-40	64.42	44.4%
0-60	113.5	78.3%
0-90	144.2	99.5%
0-180	145	100.0%

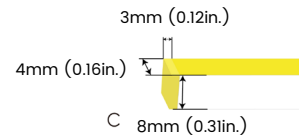
Feed Entry / End Cap Options

FT: Flush Translucent – IP54, factory-made only

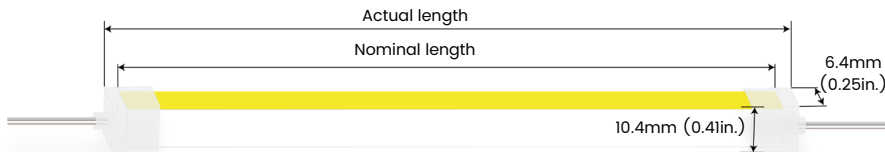


LEFT

RIGHT

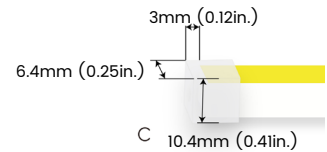


Silicone end cap – IP65, for field cuttable only



LEFT

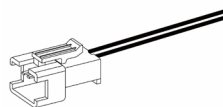
RIGHT



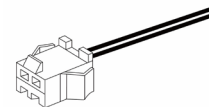
Connector Wire Options



OW: Open wire, **Dry only**
Standard 30cm (0.98ft), 24 AWG,
wire length customizable

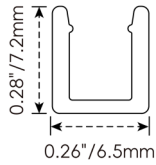


MC: Male connector, **Dry**
Standard 20cm (0.66ft), 24 AWG



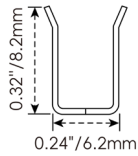
FC: Female connector, **Dry**
Standard 20cm (0.66ft), 24 AWG

Mounting Options



AC021-AP

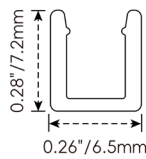
Name	Straight surface profile
Material	Aluminum
Standard Length	1M (3.28ft)



AC021-CR

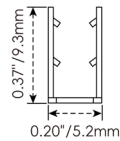
Name	Bendable surface profile
Material	Stainless Steel
Standard Length	500mm (1.64ft)
Min. Bend Diameter	30mm(1.18in.)

Clip Options



AC022-SET

Name	Mounting clip
Material	Aluminum
Standard Length	15mm(0.59in.)



AC011-SET

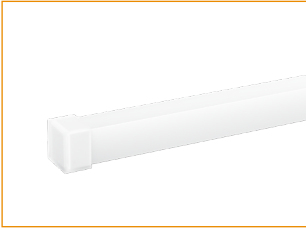
Name	Mounting clip
Material	Stainless steel
Standard Length	20.8mm(0.82in.)

Tool Options

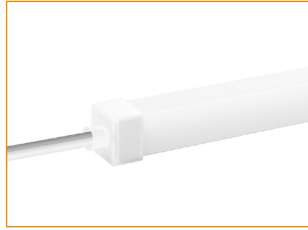


IEF-048-W

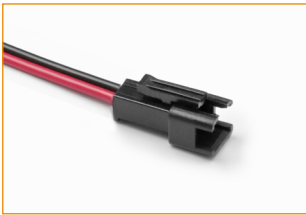
Name	Fixture
Standard Length	1pcs
* Insertion/Extraction Fixture for ACE 0408S	

Silicone End Caps (Optional, purchase for extra)

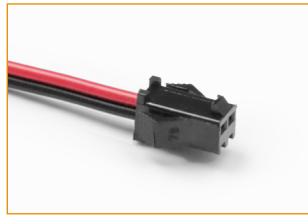
AD015
Silicone closed end cap



AD014
Silicone end cap front entry with
30cm(0.98ft) cable, 2 pin

Additional Accessories (Optional, purchase for extra)

AD00J-2-MC
Male connector,
20cm (0.66ft) red&black cable,
2 pin, IP20, 24 AWG



AD00J-2-FC
Female connector,
20cm (0.66ft) red&black cable,
2 pin, IP20, 24 AWG



AF001-1
1 Adjustable angle scissors set,
with 4 spare blades

LEDLINE ACE 0408S FC WHT

Sidel Bending · Static White

Drivers

Non-dimmable

Code	Max Load	Input	Output	Environment	Size (L x W x H)
ELG-150-24A-3Y	150W	100-305VAC	24V	Dry/Damp/IP67	219 * 63 * 35.5 mm
LRS-150-24	150W	85-132VAC / 170-264VAC	24V	Dry	159 * 97 * 30 mm

3 in 1-dimmable

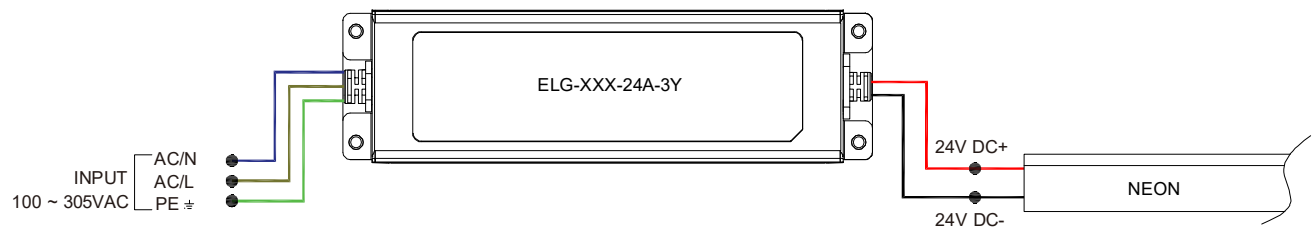
Code	Max Load	Input	Output	Environment	Size (L x W x H)
ELG-150-24B-3Y	150W	100-305VAC	24V	Dry/Damp/IP67	219 * 63 * 35.5 mm

DALI-dimmable

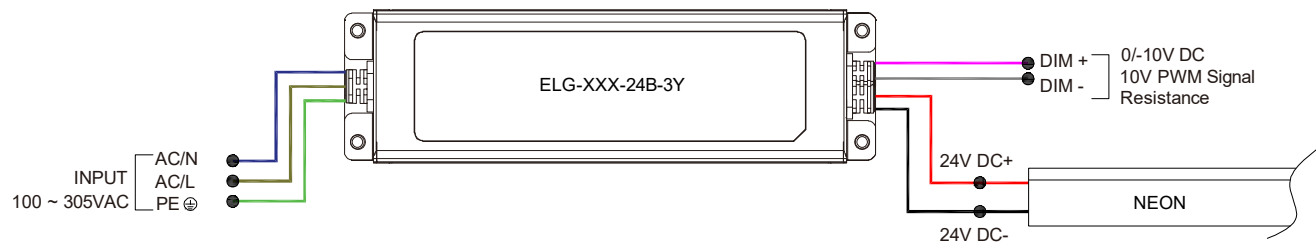
Code	Max Load	Input	Output	Environment	Size (L x W x H)
ELG-150-24DA-3Y	150W	100-305VAC	24V	Dry/Damp/IP67	219 * 63 * 35.5 mm

Wiring Diagram

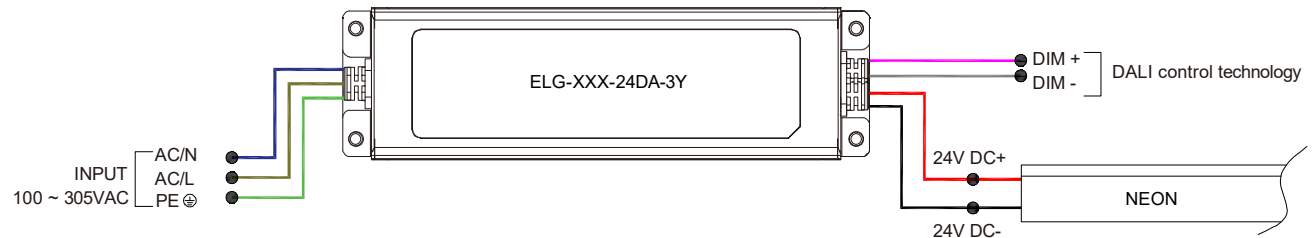
Non-dimmable



3 in 1-dimmable



DALI-dimmable



LEDLINE ACE 0408S FC WHT

Sidel Bending · Static White

24V Voltage Drop & Maximum Wire Length Chart

Based on 24V voltage with a 3% voltage drop allowance. Indicates the maximum wire length from the power supply to the start of the run.

Total load	8AWG	10AWG	12AWG	14AWG	16AWG	18AWG	20AWG	22AWG
10W / 0.4A	484.0m	304.5m	191.4m	120.4m	75.5m	47.5m	29.8m	18.5m
20W / 0.8A	242.0m	152.1m	95.7m	60.0m	37.8m	23.7m	14.9m	9.1m
30W / 1.3A	161.2m	101.5m	63.7m	39.9m	24.9m	15.8m	9.7m	6.1m
40W / 1.7A	121.0m	75.9m	47.8m	29.8m	18.9m	11.8m	7.3m	4.5m
50W / 2.1A	96.6m	60.6m	38.1m	24.0m	14.9m	9.4m	5.7m	3.6m
60W / 2.5A	80.4m	50.6m	31.7m	19.8m	12.5m	7.9m	4.8m	3.0m
70W / 2.9A	68.8m	43.2m	27.1m	17.0m	10.6m	6.7m	4.2m	2.4m
80W / 3.3A	60.3m	37.8m	23.7m	14.9m	9.4m	5.7m	3.6m	2.1m
90W / 3.8A	53.6m	33.8m	21.0m	13.1m	8.2m	5.1m	3.0m	1.8m
100W / 4.2A	48.1m	30.1m	18.9m	11.8m	7.3m	4.5m	2.7m	1.8m
110W / 4.6A	43.8m	27.4m	17.3m	10.6m	6.7m	4.2m	2.7m	1.5m
120W / 5.0A	40.2m	25.3m	15.8m	9.7m	6.1m	3.9m	2.4m	1.5m
130W / 5.4A	37.1m	23.1m	14.6m	9.1m	5.7m	3.6m	2.1m	1.2m
140W / 5.8A	34.4m	21.6m	13.4m	8.5m	5.1m	3.3m	2.1m	1.2m
150W / 6.3A	32.0m	20.1m	12.5m	7.9m	4.8m	3.0m	1.8m	1.2m
160W / 6.7A	30.1m	18.9m	11.8m	7.3m	4.5m	2.7m	1.8m	0.9m
170W / 7.1A	28.3m	17.6m	10.9m	7.0m	4.2m	2.7m	1.5m	0.9m
180W / 7.5A	26.8m	16.7m	10.3m	6.7m	3.9m	2.4m	1.5m	0.9m
190W / 7.9A	25.3m	15.8m	10.0m	6.0m	3.9m	2.4m	1.5m	0.9m
200W / 8.3A	24.0m	14.9m	9.4m	5.7m	3.6m	2.1m	1.2m	0.9m
210W / 8.8A	22.8m	14.3m	8.8m	5.4m	3.3m	2.1m	1.2m	0.6m
220W / 9.2A	21.9m	13.7m	8.5m	5.4m	3.3m	2.1m	1.2m	0.6m
230W / 9.6A	21.0m	13.1m	8.2m	5.1m	3.0m	1.8m	1.2m	0.6m
240W / 10.0A	20.1m	12.5m	7.9m	4.8m	3.0m	1.8m	1.2m	0.6m
250W / 10.4A	19.2m	12.1m	7.6m	4.5m	2.7m	1.8m	0.9m	0.6m