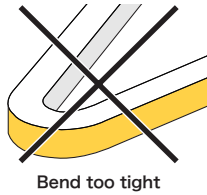
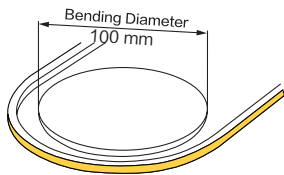
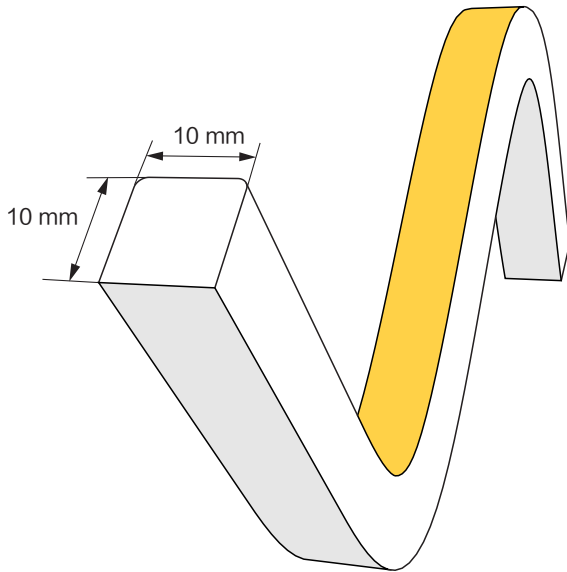
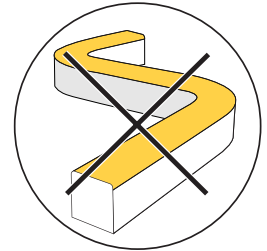
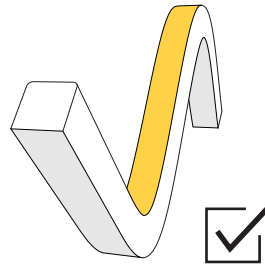


# USER INSTRUCTION

# LEDLINE ACE 1010T/1010YT



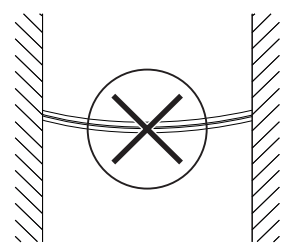
Bend too tight



Do not twist

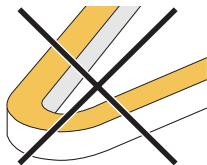
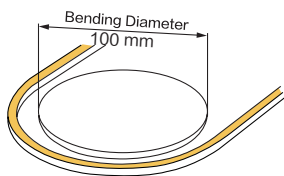
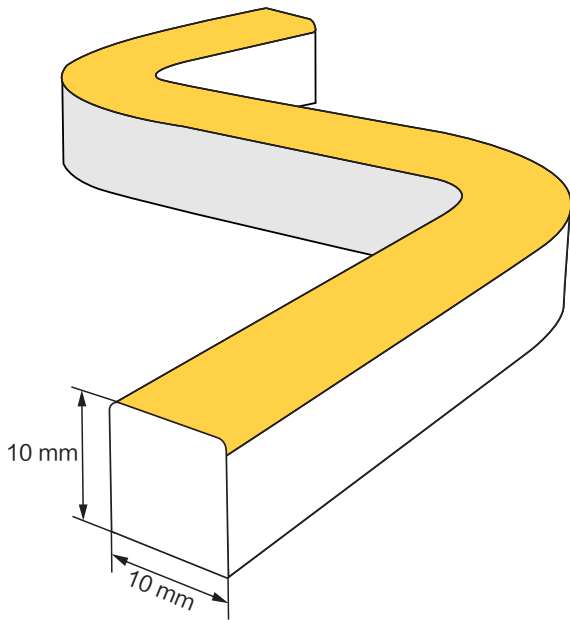


Do not hang

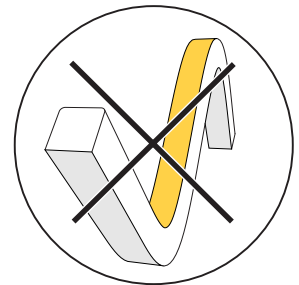
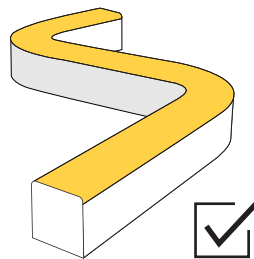


Do not droop

# LEDLINE ACE 1010S



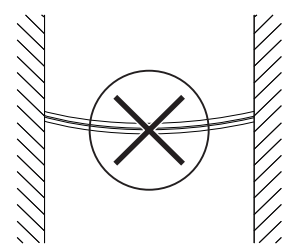
Bend too tight



Do not twist

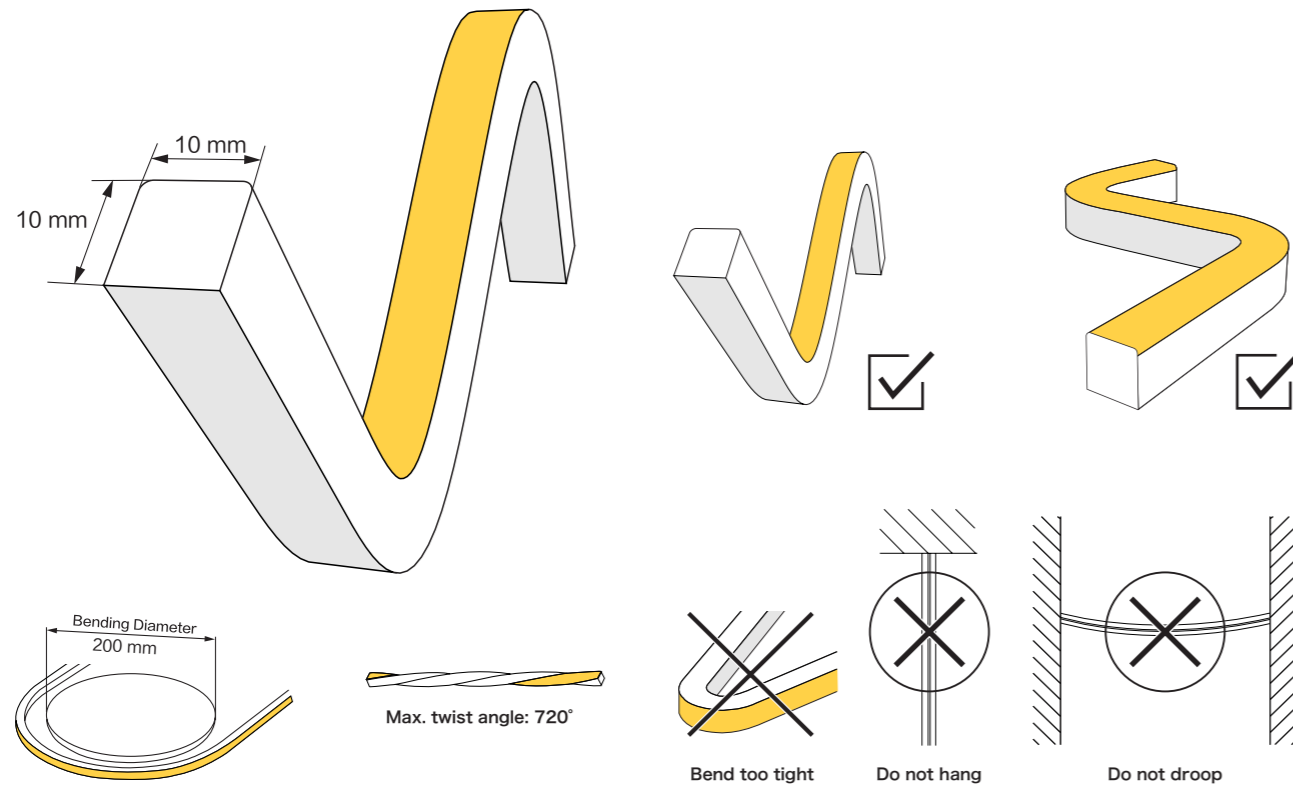


Do not hang



Do not droop

# LEDLINE AIR 1010



1. The most suitable operation temperature shall be -40°C to 65°C .
2. Please ensure that the predetermined bending direction is maintained throughout installation. Non-3D product can only be bent in one specified direction and must not be twisted.
3. Shall not be bent sharply and it may cause product damage.
4. The minimum bending diameter:  
LEDLINE ACE 1010T/1010YT : Top bending 100mm  
LEDLINE ACE 1010S : Side bending 100mm  
LEDLINE AIR 1010 (3D): Top bending 200mm; Side bending 200mm  
over bending will damage and void any warranty.

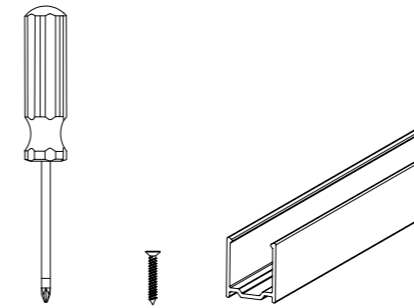
5. During the installation, the product can not be:
  - Twisted (Non-3D product can not be twisted, 3D product can be twisted within 720° )
  - Dropped
  - Bent at a 90° angle or bent at all
  - Sagging/Hanging down
6. For installation, 2 ways for your selection.
  - Mounting clips
  - Profile
7. Install the product into profile carefully and correctly, taking out and re-assembling will most likely cause the product damaged.

## Warranty:

- All LED light are warranted to be free from defects in product itself from the date of purchase.
- Within this period, we, at its sole option, repair or replace any components which fail from correct use. Such repairs or replacement will be made at no charge to the customer for parts only, provided that the customer shall be responsible for transportation cost of the goods.
- This warranty does not cover failures due to abuse, misuse, improper handling, act of nature, negligence, normal wear, accidental damage, modifications or repairs made by the purchaser or incorrect voltage conditions.

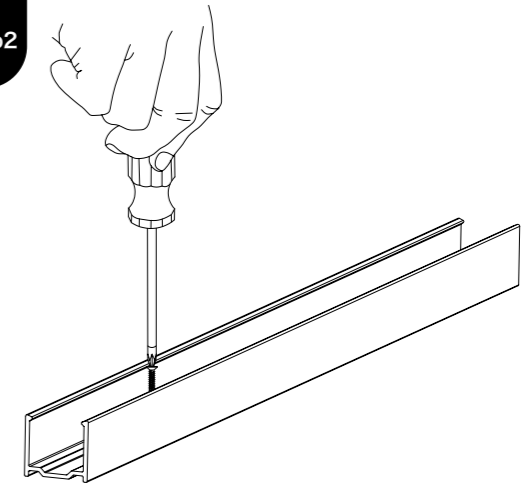
# Aluminium Profile: AC023-AP

## Step1



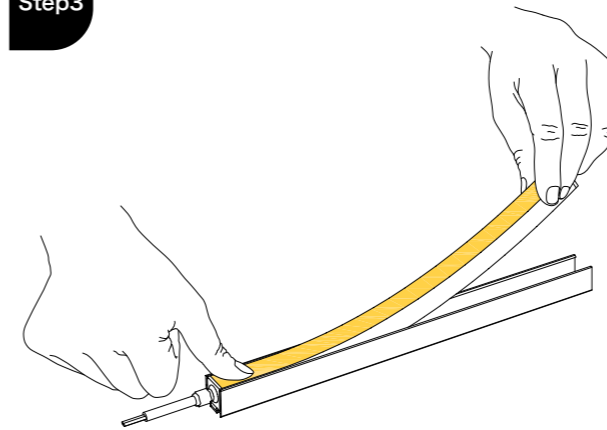
Preparation: Gather all tools and materials.

## Step2



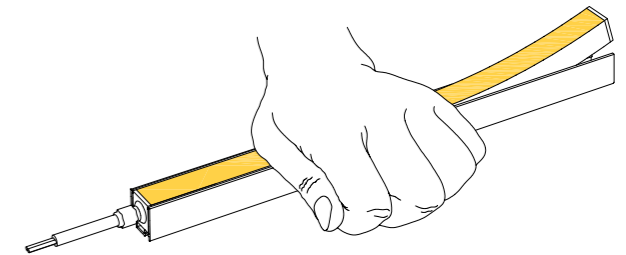
Use screws to secure the profile to the needed installation surface.

## Step3



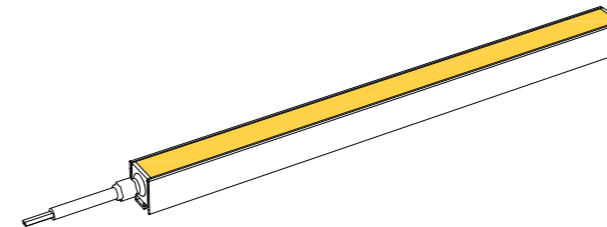
Use your thumb to first fix the starting end of the strip (with wires).

## Step4



Use your palm to gradually press the Neon strip into the profile.

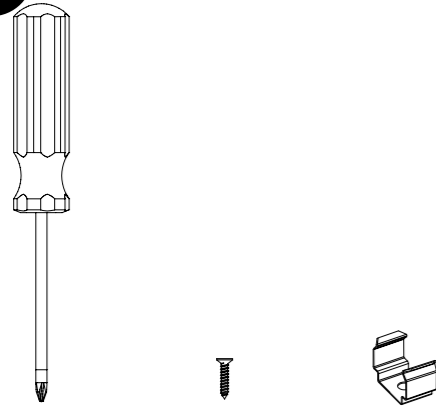
## Step5



Ensure that the strip is parallel to the profile and installed smoothly in place (as shown in the figure).

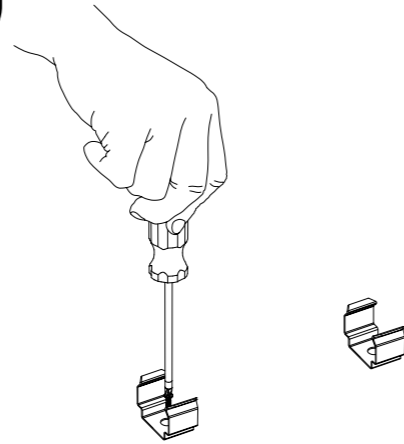
## Mounting Clips: AC025-SET

Step1



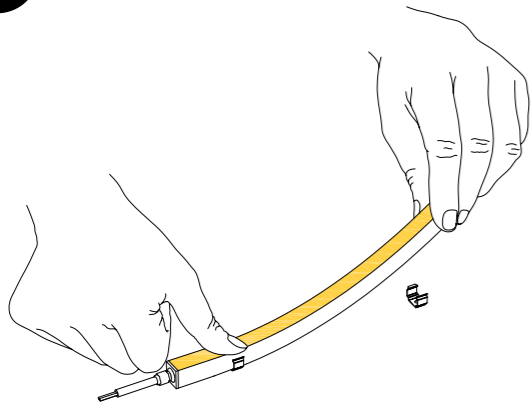
**Preparation:** Gather all tools and materials.

Step2



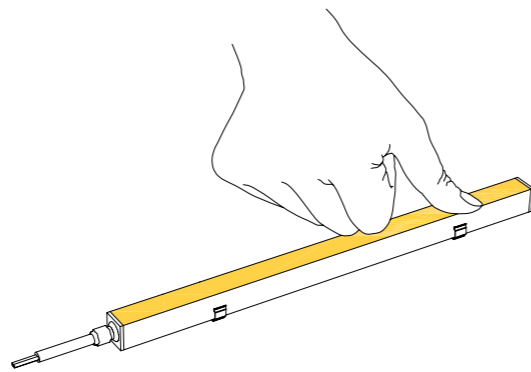
Use screws to secure the profile to the needed installation surface.

Step3



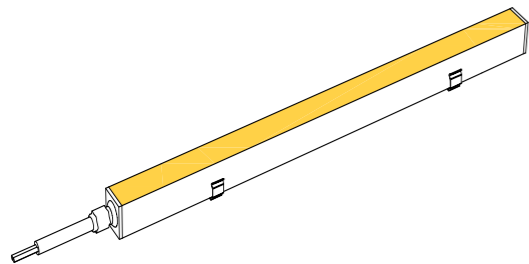
Use your thumb to first fix the starting end of the strip (with wires).

Step4



Use your palm to gradually press the Neon strip into the profile.

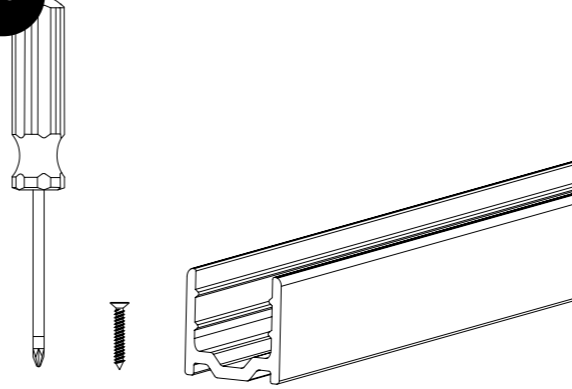
Step5



Ensure that the strip is parallel to the profile and installed smoothly in place (as shown in the figure).

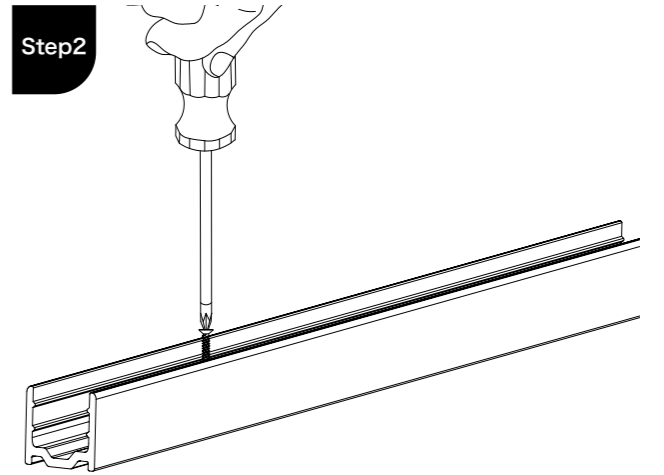
## PC Profile: AC023-PC

Step1



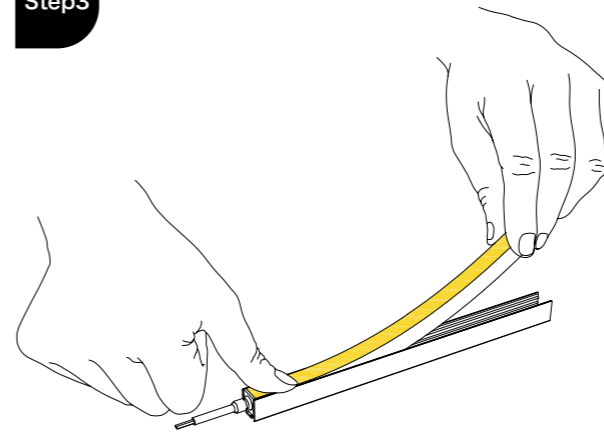
**Preparation:** Gather all tools and materials.

Step2



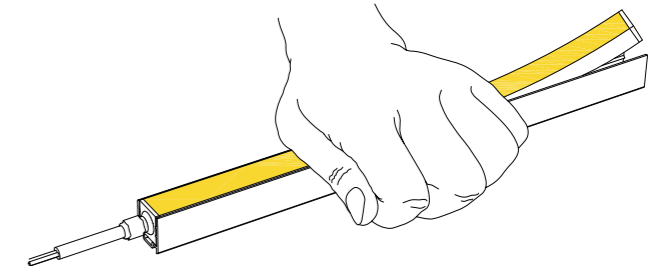
Use screws to secure the profile to the needed installation surface.

Step3



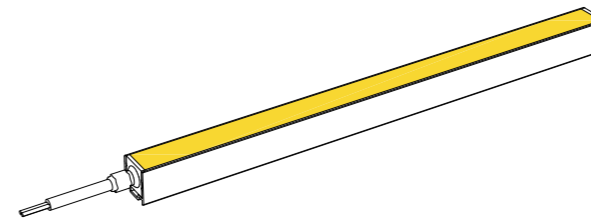
Use your thumb to first fix the starting end of the strip (with wires).

Step4



Use your palm to gradually press the Neon strip into the profile.

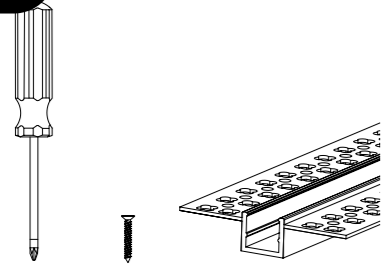
Step5



Ensure that the strip is parallel to the profile and installed smoothly in place (as shown in the figure).

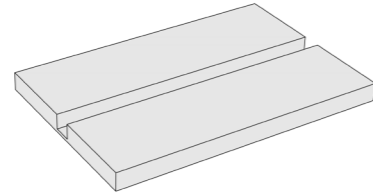
## Mud-in Application: AC023-LP

Step1



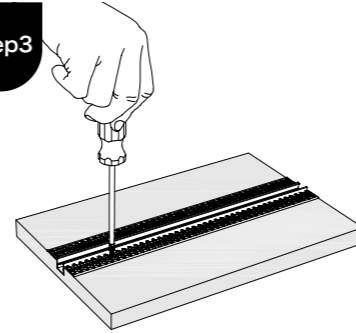
**Preparation:** Gather all tools and materials.

Step2



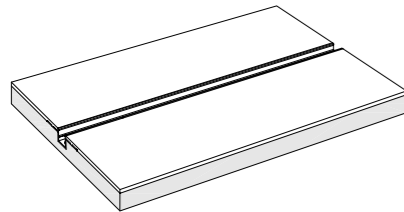
According to the size of the profile, groove the required installation surface (wooden board or wall, etc.).

Step3



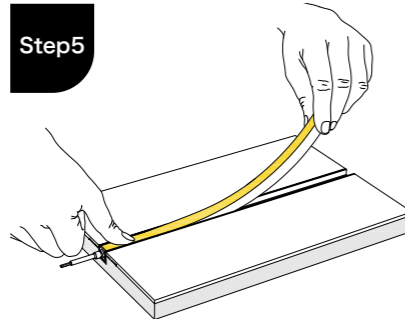
Use screws to secure the profile to the grooved installation surface.

Step4



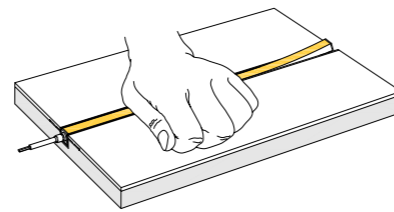
Fix the flange edge of the profile with cement paste (ensure it is level with the installation surface).

Step5



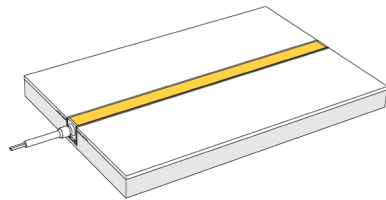
Use your thumb to first fix the starting end of the strip (with wires).

Step6



Use your palm to gradually press the Neon strip into the profile.

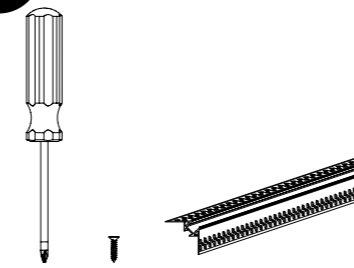
Step7



Ensure that the strip is parallel to the profile and installed smoothly in place (as shown in the figure)

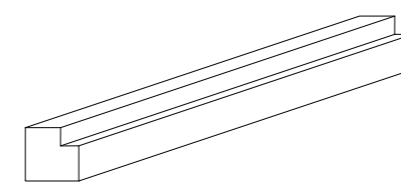
## Aluminium Profile: AC023-OCP

Step1



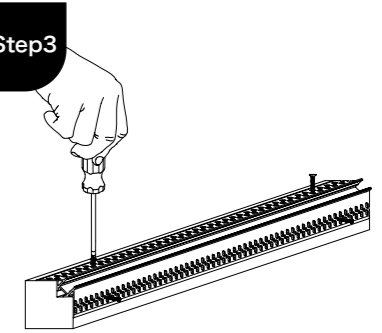
**Preparation:** Gather all tools and materials.

Step2



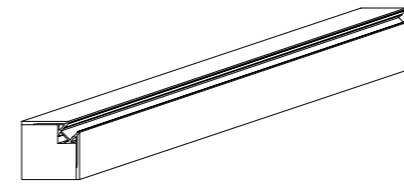
According to the size of the profile, groove the required installation surface (wooden board or wall, etc.).

Step3



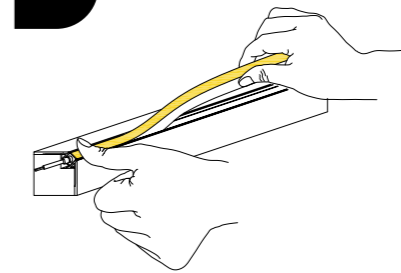
Use screws to secure the profile to the grooved installation surface.

Step4



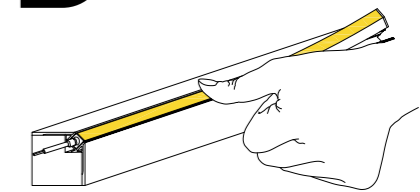
Fix the flange edge of the profile with cement paste (ensure it is level with the installation surface).

Step5



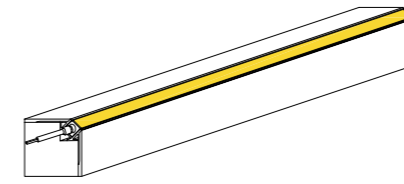
Use your thumb to first fix the starting end of the strip (with wires).

Step6



Use your palm to gradually press the Neon strip into the profile.

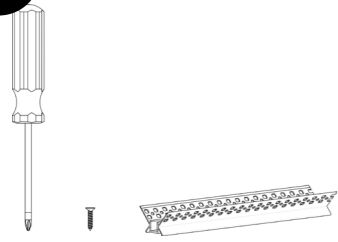
Step7



Ensure that the strip is parallel to the profile and installed smoothly in place (as shown in the figure)

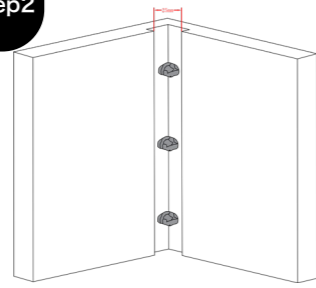
## Aluminium Profile: AC023-ICP

Step1



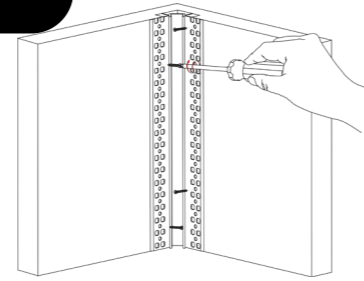
**Preparation:** Gather all tools and materials.

Step2



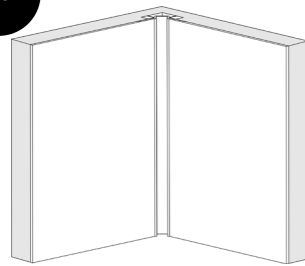
Make a slot in the wall or wooden board with an outer width of 24-26mm, and apply several lumps of cement/mortar into the slot.

Step3



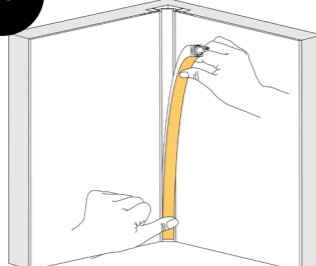
Install the aluminum profile by fastening screws through the holes on the flanges.

Step4



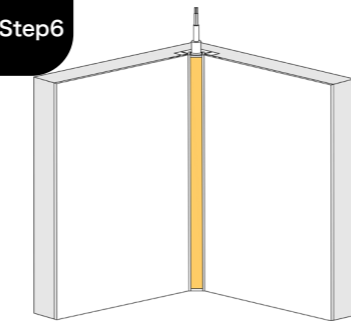
Apply putty and paint.

Step5



Secure the end of the strip with your thumb, then use your palm to gradually press the rest of it into the profile.

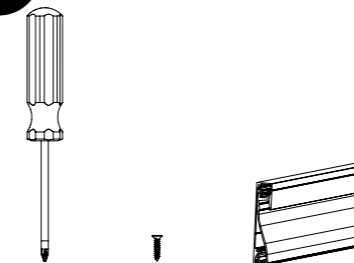
Step6



Ensure the strip remains parallel to the profile and is installed flat and securely in place.

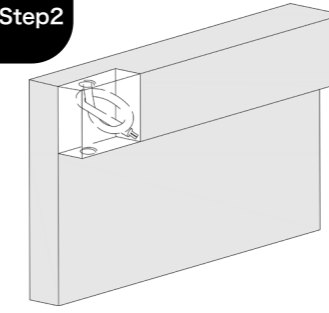
## Aluminium Profile: AC023-SP

Step1



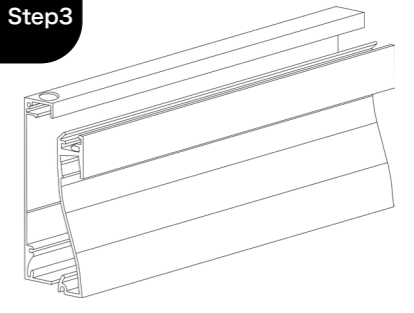
**Preparation:** Gather all tools and materials.

Step2



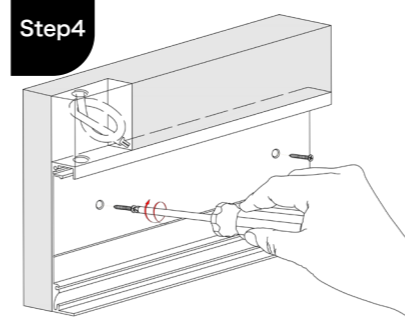
Reserve space for the aluminum profile and the junction box in the rough wall corner.

Step3



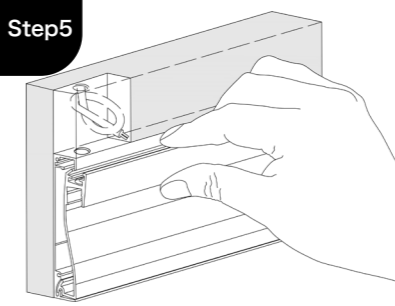
Drill matching holes for the power cable in both parts of the two-piece aluminum profile.

Step4



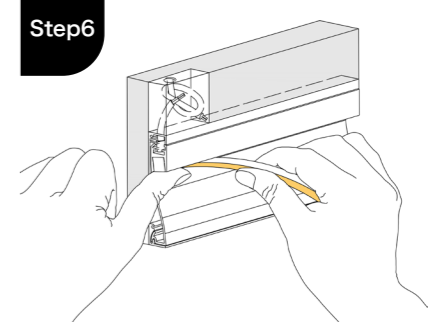
Secure the base profile to the wall using a screwdriver and screws.

Step5



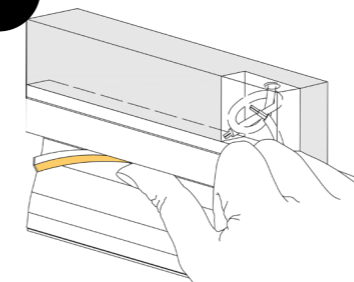
Snap the cover panel onto the installed base profile.

Step6



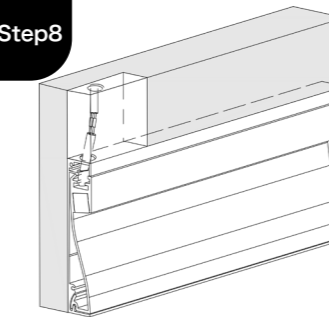
Secure the starting end of the strip (cable end) into the profile with your thumbs.

Step7



Gradually press the rest of the neon LED strip into the profile step by step using your fingers.

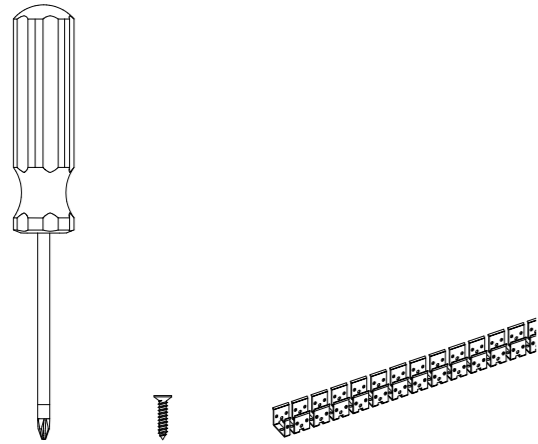
Step8



Confirm the wire polarity in the junction box, connect the wires properly, and close the junction box cover.

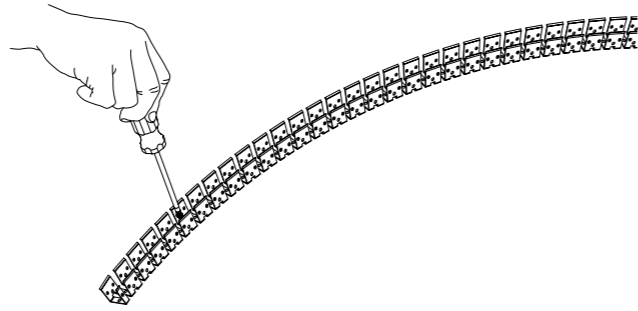
## Aluminium Profile: AC023-CR

Step1



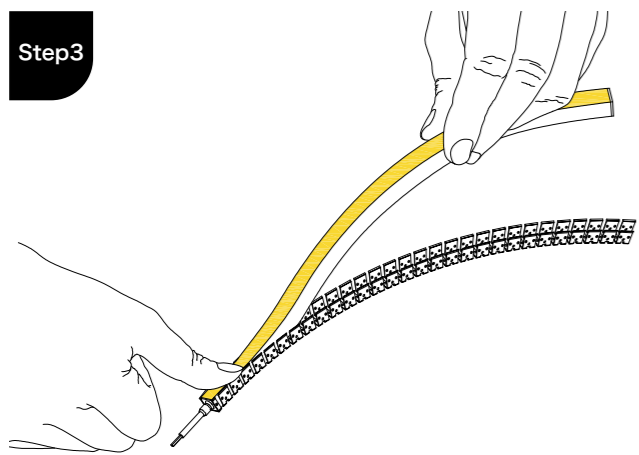
Preparation: Gather all tools and materials.

Step2



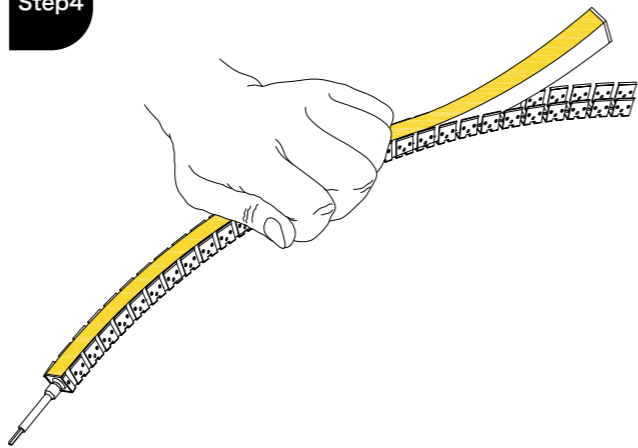
Select the curved installation surface. Bend the profile to fit tightly against the surface and secure it with screws.

Step3



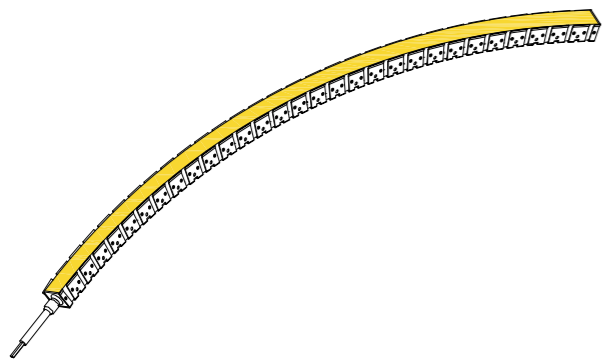
Use your thumb to first fix the starting end of the strip (with wires).

Step4



Use your palm to gradually press the Neon strip into the profile.

Step5



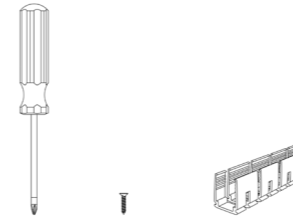
Ensure that the strip is parallel to the profile and installed smoothly in place (as shown in the figure).



**!** The minimum bending diameter of AC023-CR is 100mm for top bending and 100mm for side bending.

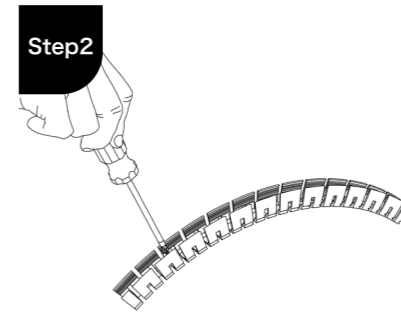
## PC Profile: AC023-CPC

Step1



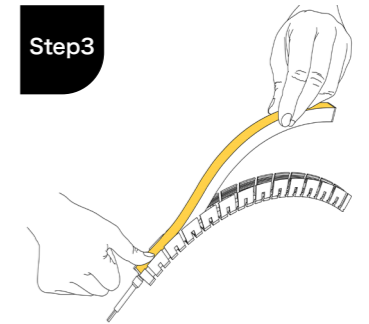
Preparation: Gather all tools and materials.

Step2



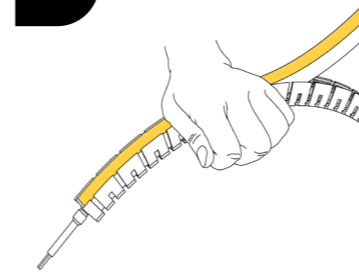
Select the curved installation surface. Bend the profile to fit tightly against the surface and secure it with screws.

Step3



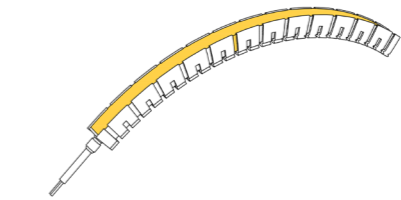
Use your thumb to first fix the starting end of the strip (with wires).

Step4

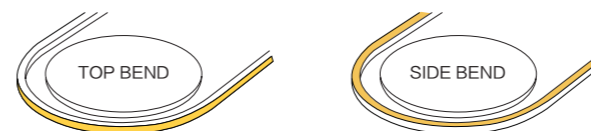


Use your palm to gradually press the Neon strip into the profile.

Step5



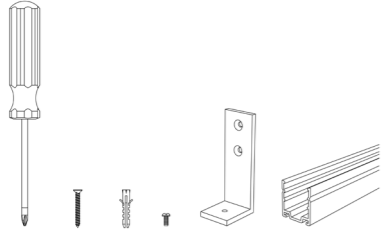
Ensure that the strip is parallel to the profile and installed smoothly in place (as shown in the figure)



**!** The minimum bending diameter of AC023-CPC is 100mm for top bending and 100mm for side bending.

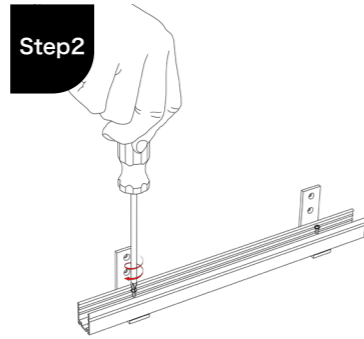
## AL Shape Mounting Bracket: AC167-SET-LA

Step1



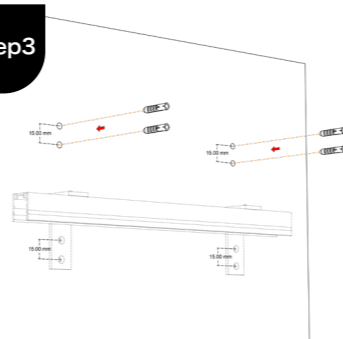
**Preparation:** Gather all tools and materials.

Step2



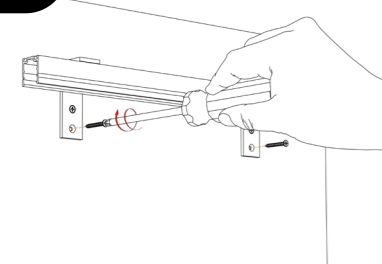
Drill holes in the profile and place it on the short side of the L-shaped bracket. Thread small screws through the holes in the profile and the short side of the L-shaped bracket, tighten them, and ensure they are firmly connected.

Step3



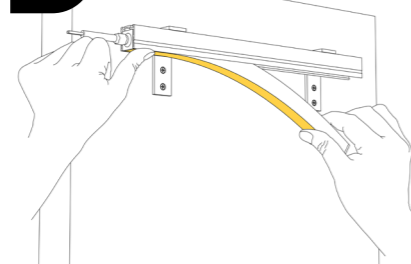
Drill holes on the surface to be installed according to the size of the screws. The distance between the centers of the two screw holes is around 15mm.

Step4



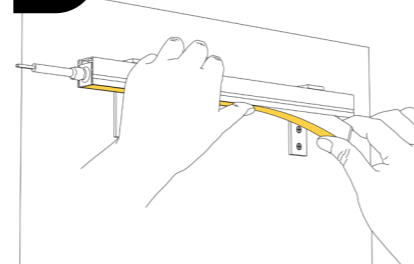
Pick up the fixed profile and bracket, align the two holes on the long side of the L-shaped bracket with the pre drilled holes, and then lock them with long screws.  
(Note: first screw in the screws from one left and one right, and then screw in the second screw from one left and one right).

Step5



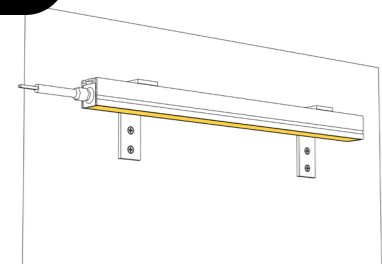
Use your thumb to first fix the starting end of the strip (with wires).

Step6



Then gradually press the Neon strip into the profile.

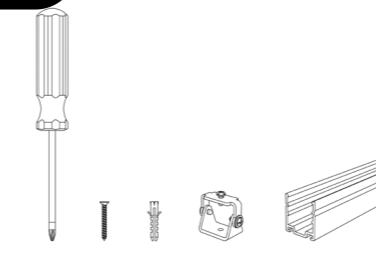
Step7



Ensure that the strip is parallel to the profile and installed smoothly in place (as shown in the figure).

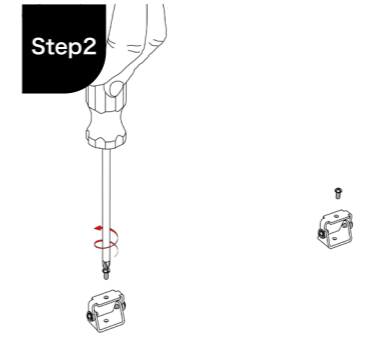
## Angle Mounting Bracket: AC167-AMB

Step1



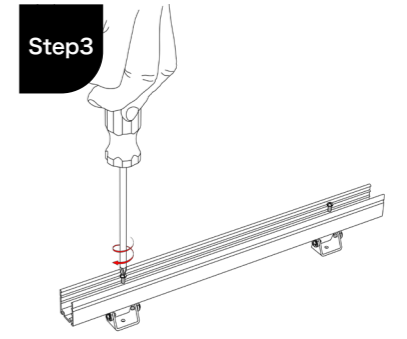
**Preparation:** Gather all tools and materials.

Step2



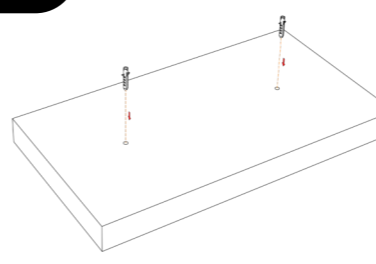
Unscrew all the screws on the rotating bracket.

Step3



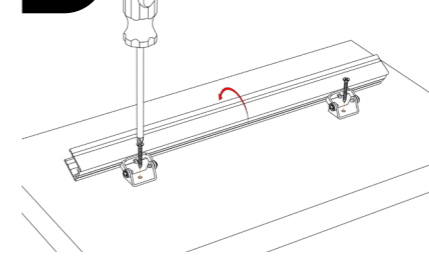
Thread the screws removed from the rotating bracket through the corresponding holes on the profile, tighten them, and ensure that they are securely connected to the rotating bracket.

Step4



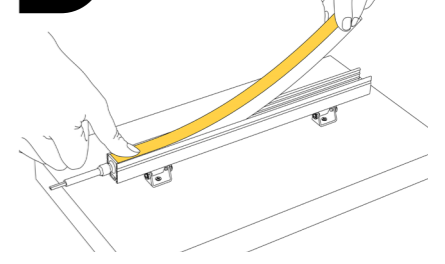
Drill holes on the surface to be installed according to the size of the screws.

Step5



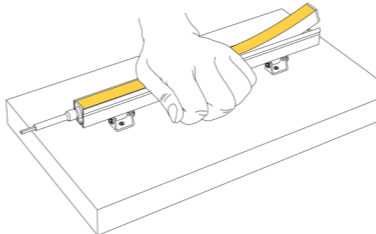
Fix the rotating bracket onto the installation surface with screws.

Step6



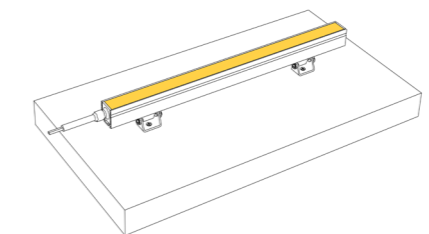
Use your thumb to first fix the starting end of the strip (with wires).

Step7



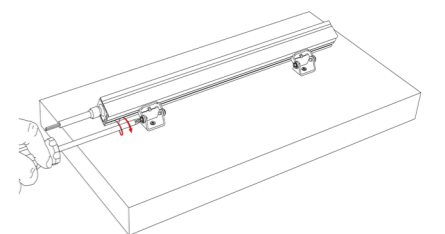
Use your palm to gradually press the Neon strip into the profile.

Step8



Ensure that the strip is parallel to the profile and installed smoothly in place (as shown in the figure).

Step9



Rotate the rotating bracket to the desired angle, and then use a screwdriver to tighten the screws on the side of the rotating bracket to fix the angle.