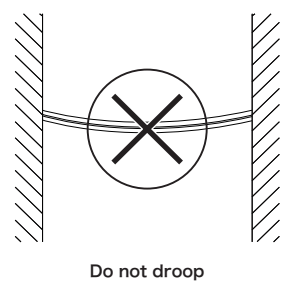
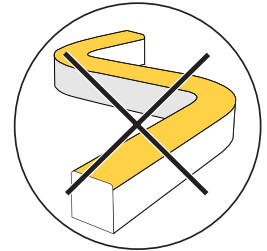
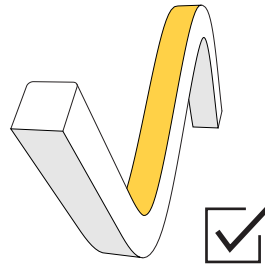
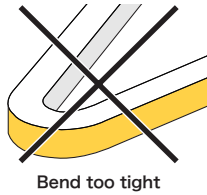
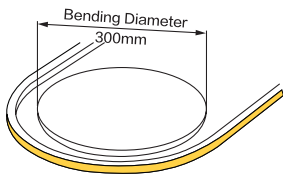
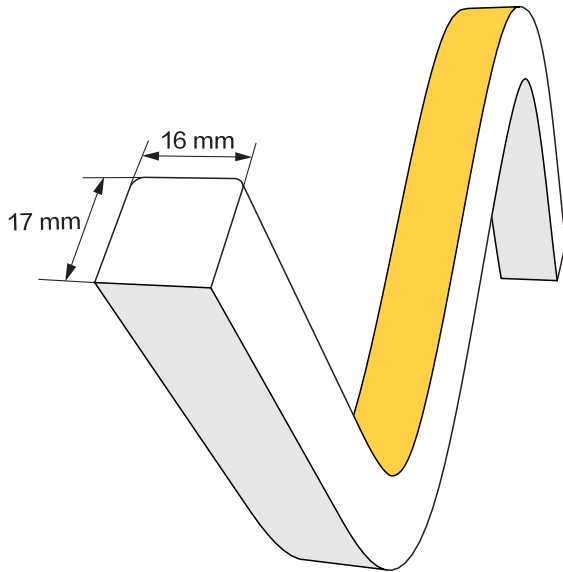
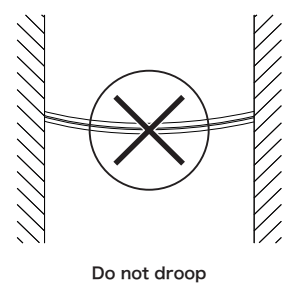
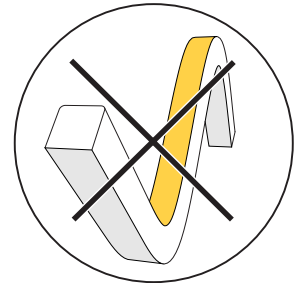
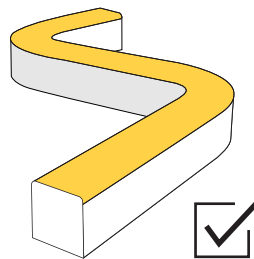
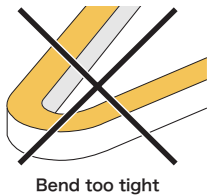
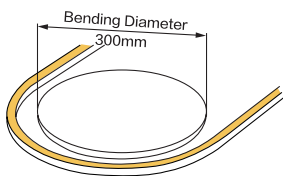
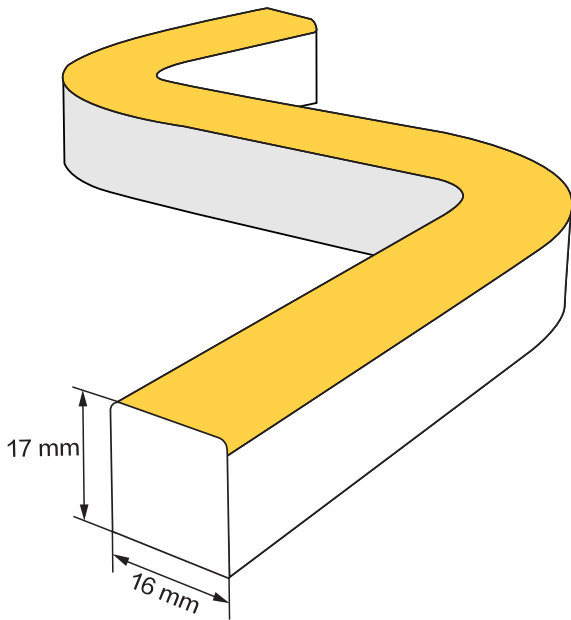


USER INSTRUCTION

LEDLINE OPTIC 1617T



LEDLINE OPTIC 1617S



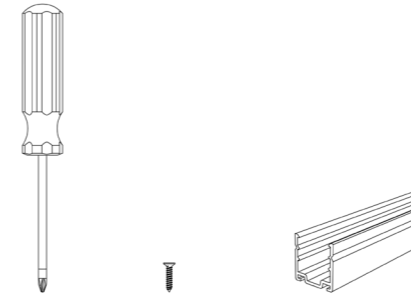
1. The most suitable operation temperature shall be -40°C to 65°C .
2. Please ensure that the predetermined bending direction is maintained throughout installation. Non-3D product can only be bent in one specified direction and must not be twisted.
3. Shall not be bent sharply and it may cause product damage.
4. The minimum bending diameter:
LEDLINE OPTIC 1617T : Top bending 300mm
LEDLINE OPTIC 1617S : Side bending 300mm
over bending will damage and void any warranty.
5. During the installation, the product can not be:
-Twisted
-Dropped
-Bent at a 90° angle or bent at all
-Sagging/Hanging down
6. For installation, 2 ways for your selection.
-Mounting clips
-Profile
7. Install the product into profile carefully and correctly, taking out and re-assembling will most likely cause the product damaged.

Warranty:

- All LED light are warranted to be free from defects in product itself from the date of purchase.
- Within this period, we, at its sole option, repair or replace any components which fail from correct use. Such repairs or replacement will be made at no charge to the customer for parts only, provided that the customer shall be responsible for transportation cost of the goods.
- This warranty does not cover failures due to abuse, misuse, improper handling, act of nature, negligence, normal wear, accidental damage, modifications or repairs made by the purchaser or incorrect voltage conditions.

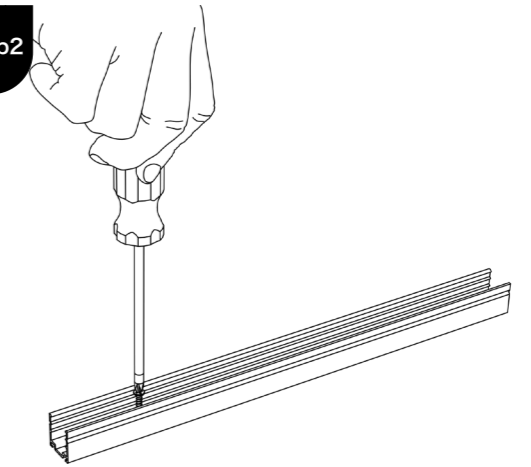
Aluminium Profile: AC167-AP

Step1



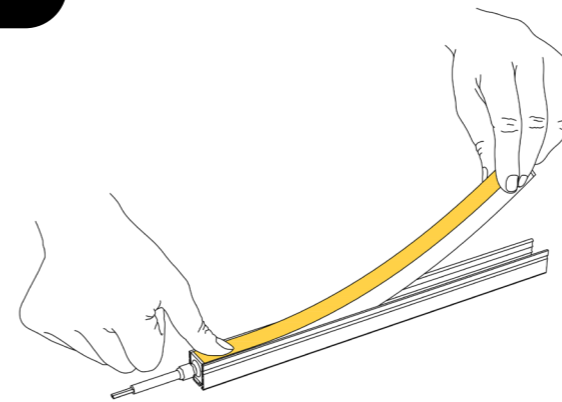
Preparation: Gather all tools and materials.

Step2



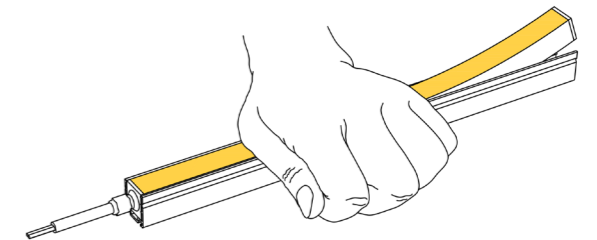
Use screws to secure the profile to the needed installation surface.

Step3



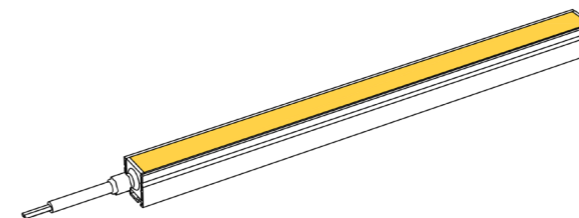
Use your thumb to first fix the starting end of the strip (with wires).

Step4



Use your palm to gradually press the Neon strip into the profile.

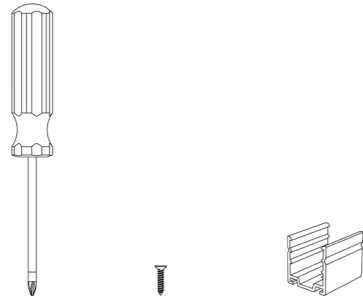
Step5



Ensure that the strip is parallel to the profile and installed smoothly in place (as shown in the figure).

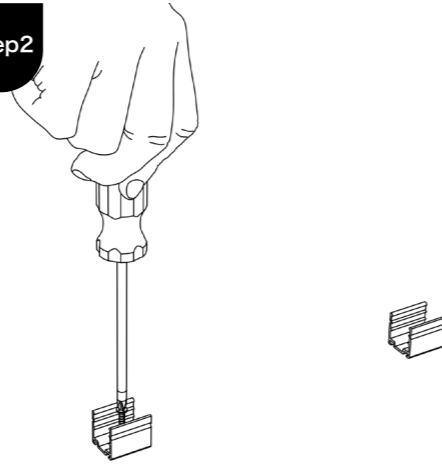
Mounting Clips: AC167-MC

Step1



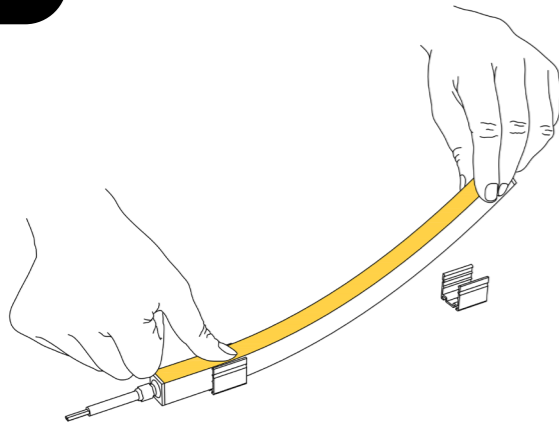
Preparation: Gather all tools and materials.

Step2



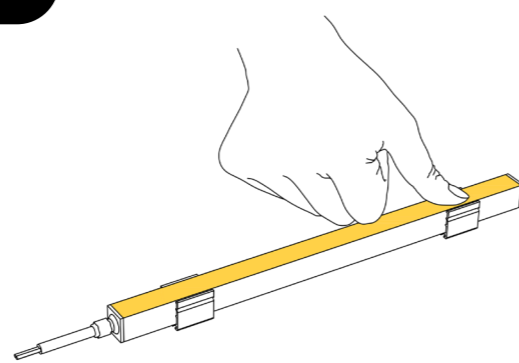
Use screws to secure the profile to the needed installation surface.

Step3



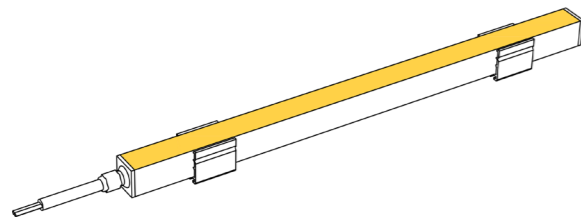
Use your thumb to first fix the starting end of the strip (with wires).

Step4



Use your palm to gradually press the Neon strip into the profile.

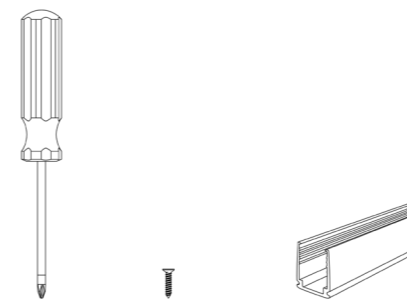
Step5



Ensure that the strip is parallel to the profile and installed smoothly in place (as shown in the figure).

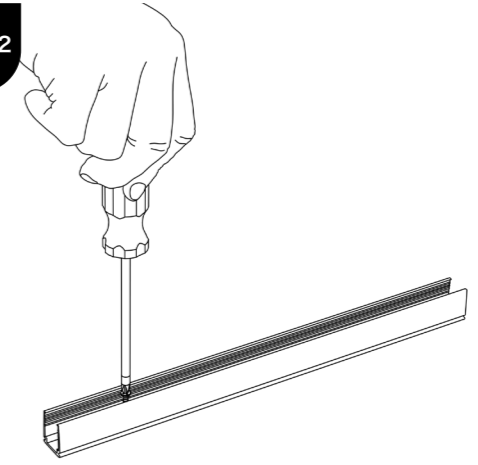
PC Profile: AC167-PC

Step1



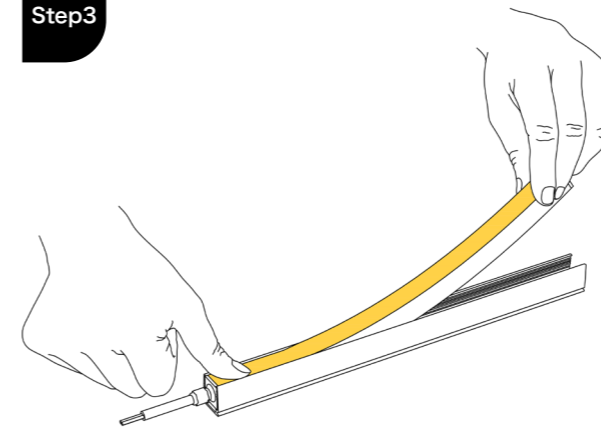
Preparation: Gather all tools and materials.

Step2



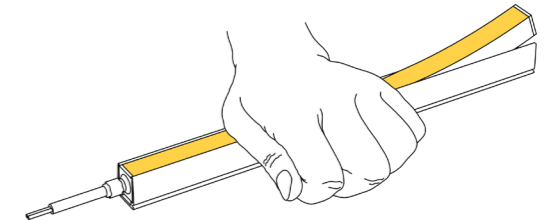
Use screws to secure the profile to the needed installation surface.

Step3



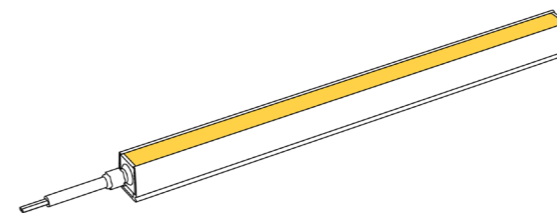
Use your thumb to first fix the starting end of the strip (with wires).

Step4



Use your palm to gradually press the Neon strip into the profile.

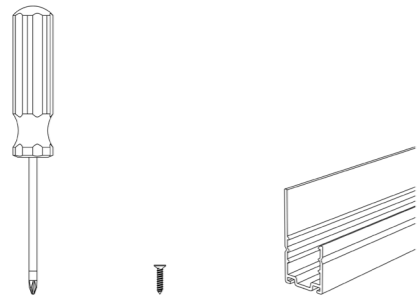
Step5



Ensure that the strip is parallel to the profile and installed smoothly in place (as shown in the figure).

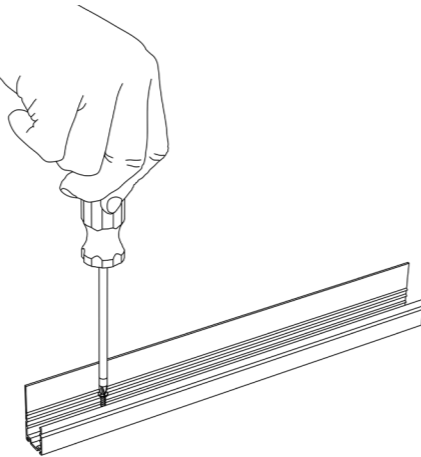
Aluminium Profile: AC167-BA

Step1



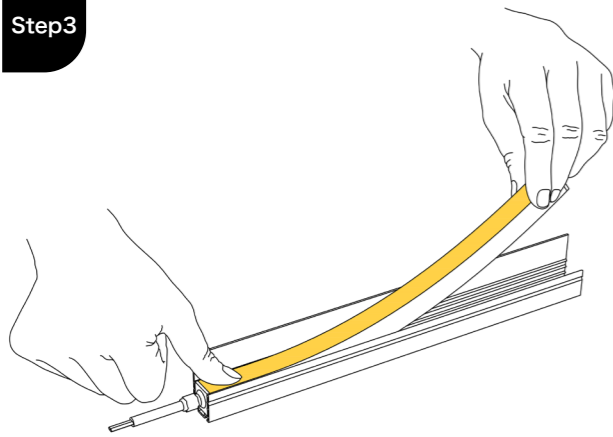
Preparation: Gather all tools and materials.

Step2



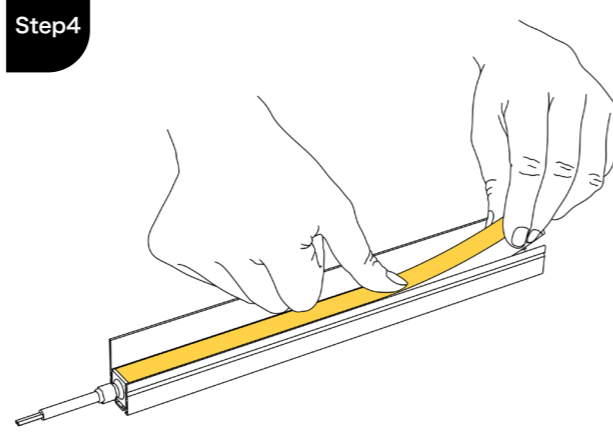
Use screws to secure the profile to the needed installation surface.

Step3



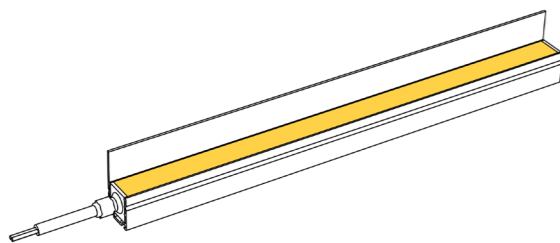
Use your thumb to first fix the starting end of the strip (with wires).

Step4



Then gradually press the Neon strip into the profile.

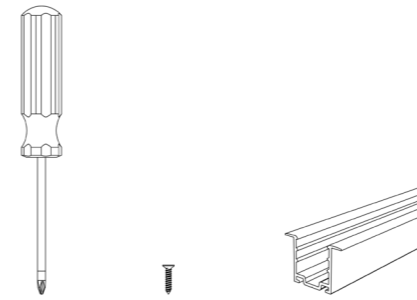
Step5



Ensure that the strip is parallel to the profile and installed smoothly in place (as shown in the figure).

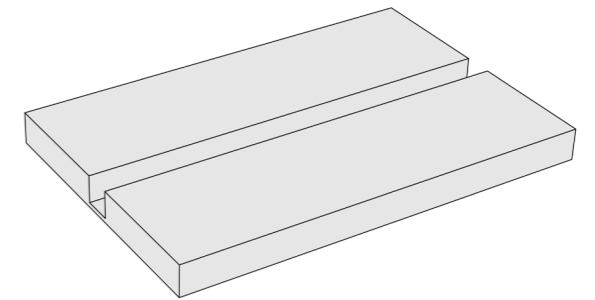
Aluminium Profile: AC167-EP

Step1



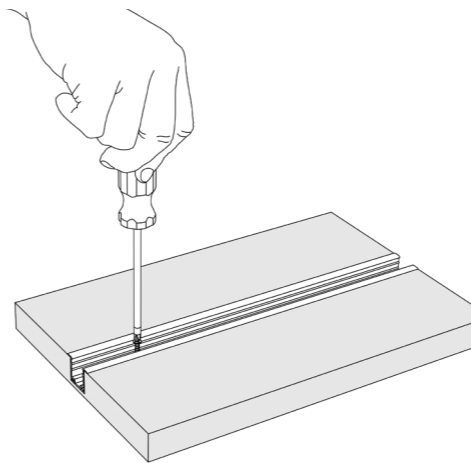
Preparation: Gather all tools and materials.

Step2



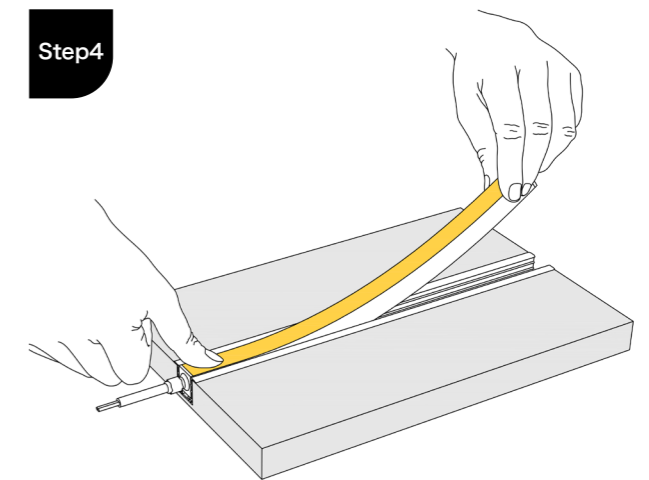
According to the size of the profile, groove the required installation surface (wooden board or wall, etc.).

Step3



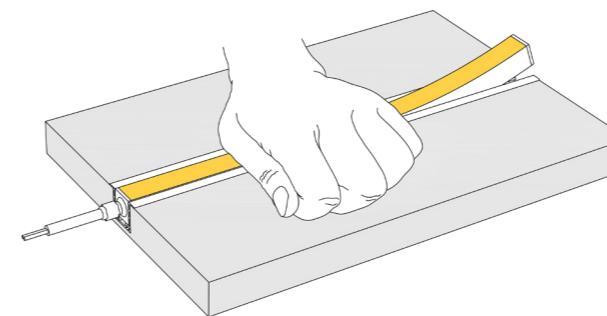
Use screws to secure the profile to the grooved installation surface.

Step4



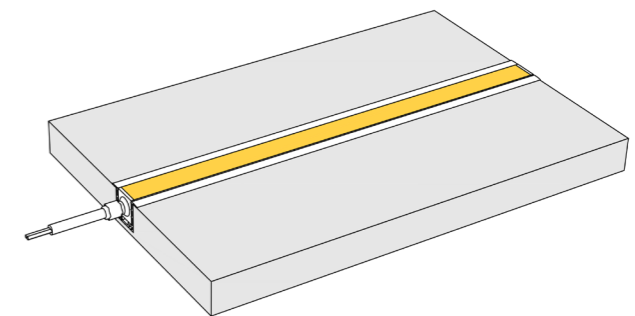
Use your thumb to first fix the starting end of the strip (with wires).

Step5



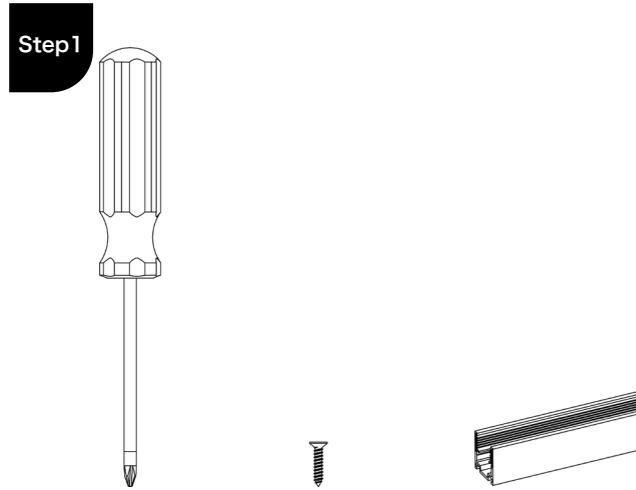
Use your palm to gradually press the Neon strip into the profile.

Step6

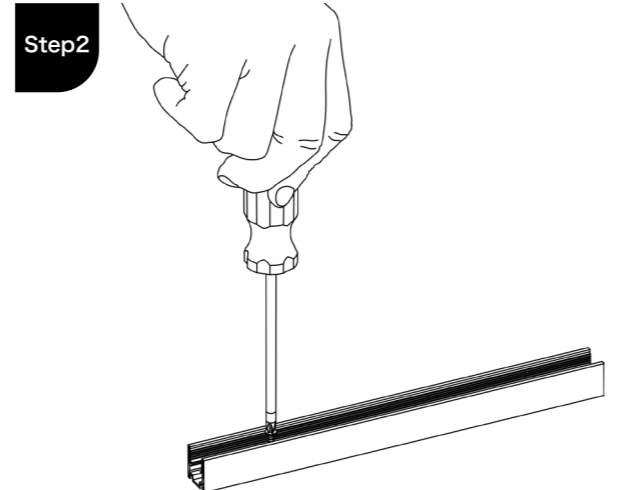


Ensure that the strip is parallel to the profile and installed smoothly in place (as shown in the figure).

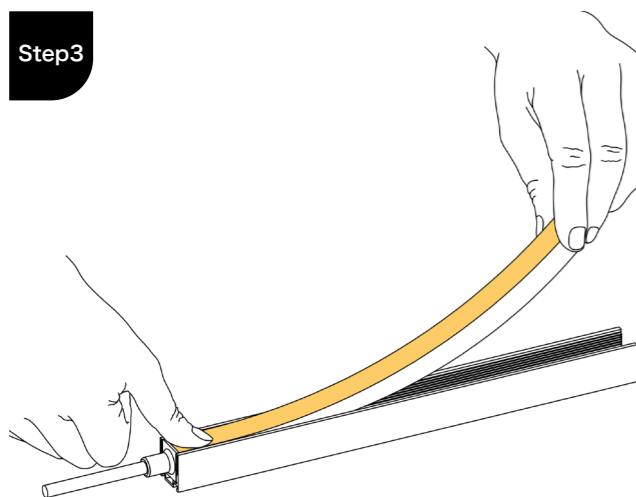
PC Profile: AC167-SGP



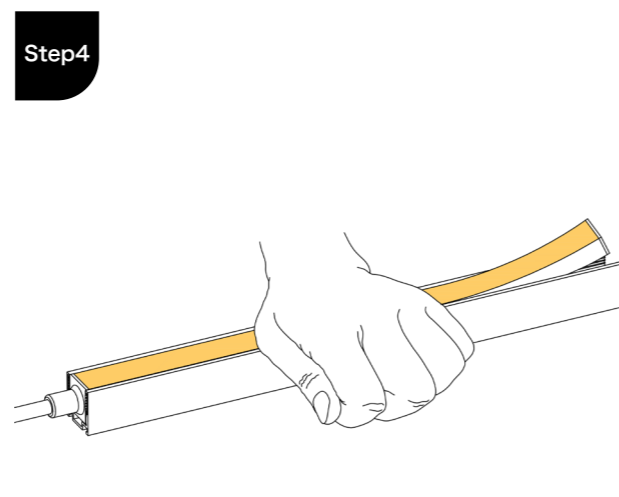
Step1
Preparation: Gather all tools and materials.



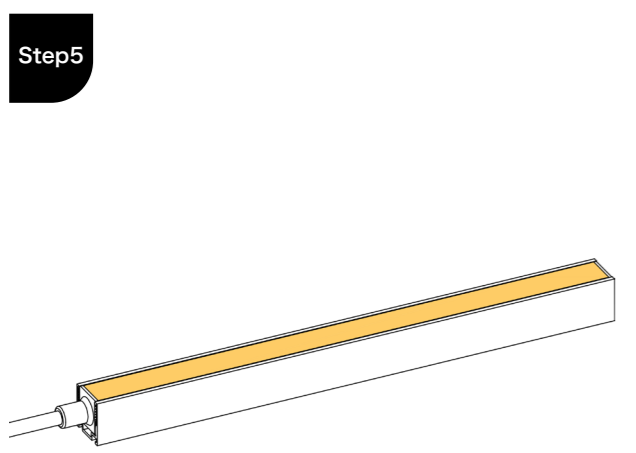
Step2
Use screws to secure the profile to the needed installation surface.



Step3
Use your thumb to first fix the starting end of the strip (with wires).

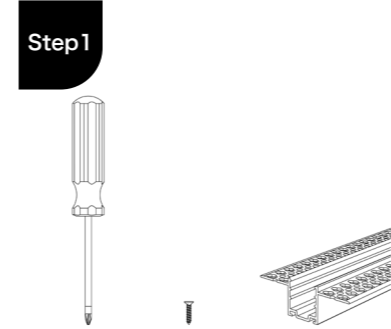


Step4
Use your palm to gradually press the Neon strip into the profile.

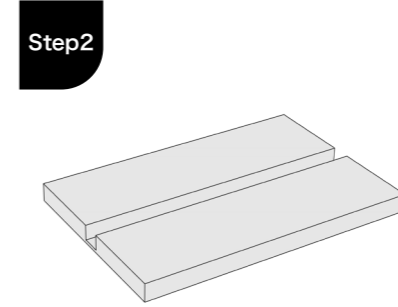


Step5
Ensure that the strip is parallel to the profile and installed smoothly in place (as shown in the figure).

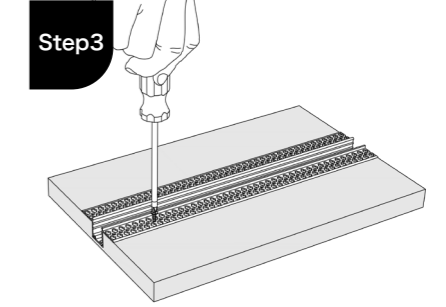
Mud-in Application: AC167-LP



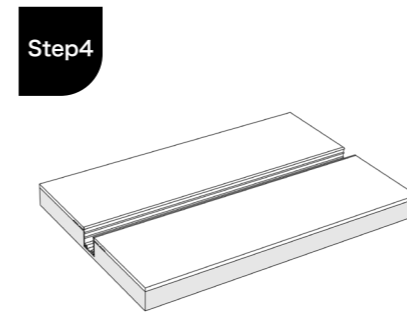
Step1
Preparation: Gather all tools and materials.



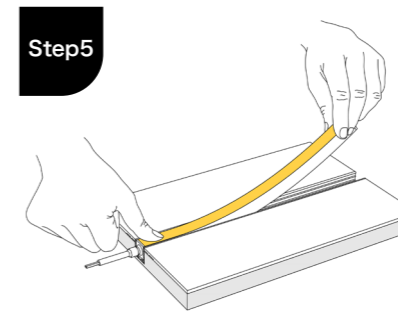
Step2
According to the size of the profile, groove the required installation surface (wooden board or wall, etc.).



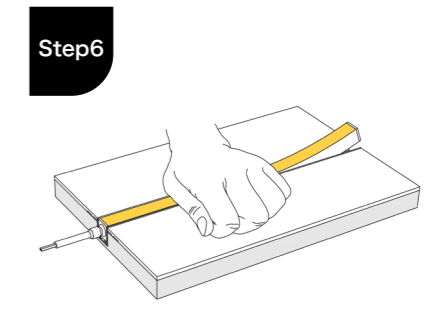
Step3
Use screws to secure the profile to the grooved installation surface.



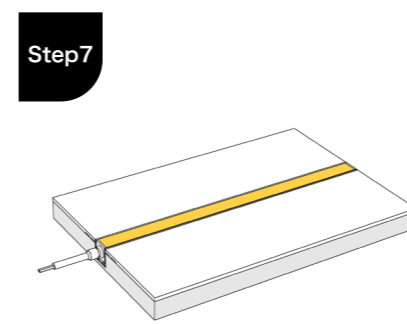
Step4
Fix the flange edge of the profile with cement paste (ensure it is level with the installation surface).



Step5
Use your thumb to first fix the starting end of the strip (with wires).



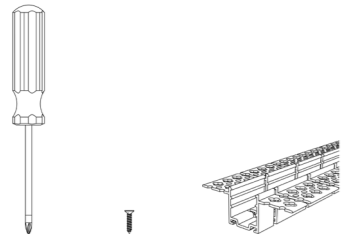
Step6
Use your palm to gradually press the Neon strip into the profile.



Step7
Ensure that the strip is parallel to the profile and installed smoothly in place (as shown in the figure)

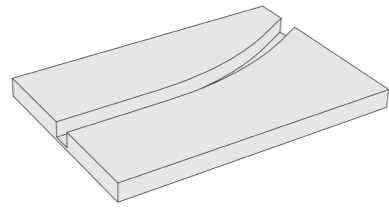
Curved Mud-in Application: AC167-CRL

Step1



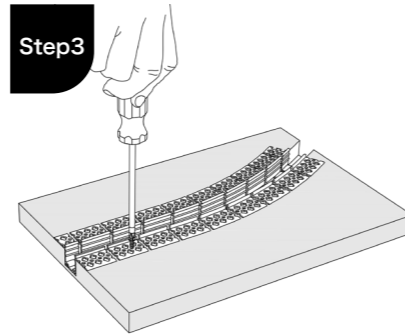
Preparation: Gather all tools and materials.

Step2



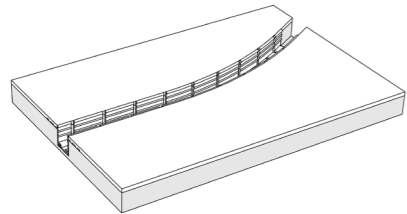
According to the size of the profile, groove the required installation curved surface (wooden board or wall , etc.).

Step3



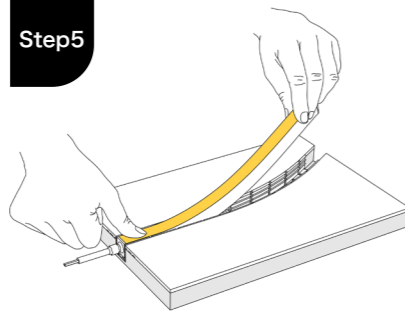
Use screws to secure the profile to the grooved installation surface.

Step4



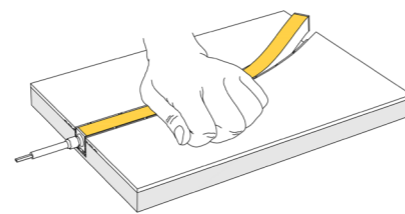
Fix the flange edge of the profile with cement paste (ensure it is level with the installation surface).

Step5



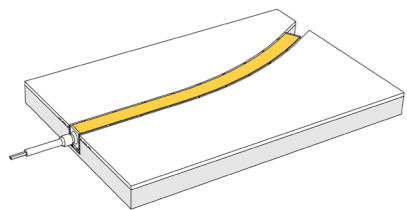
Use your thumb to first fix the starting end of the strip (with wires).

Step6

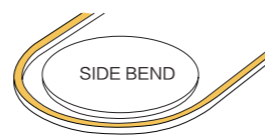
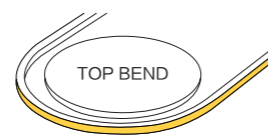


Use your palm to gradually press the Neon strip into the profile.

Step7



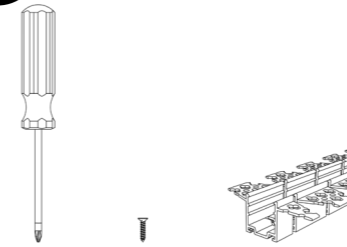
Ensure that the strip is parallel to the profile and installed smoothly in place (as shown in the figure)



The minimum bending diameter of **AC167-CRL** is 600mm for top bending and 1600mm for side bending

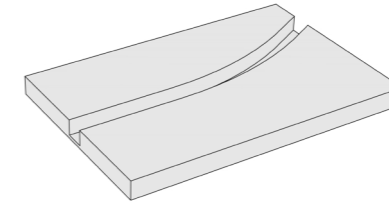
Curved Mud-in Application: AC167-SCRL

Step1



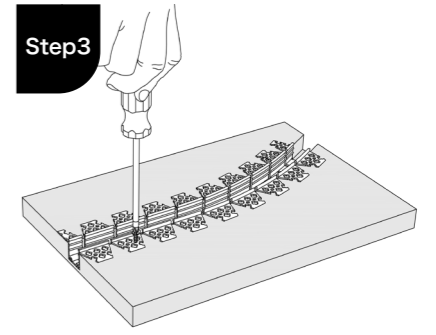
Preparation: Gather all tools and materials.

Step2



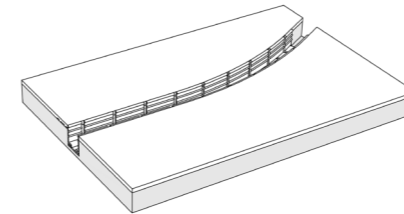
According to the size of the profile, groove the required installation curved surface (wooden board or wall , etc.).

Step3



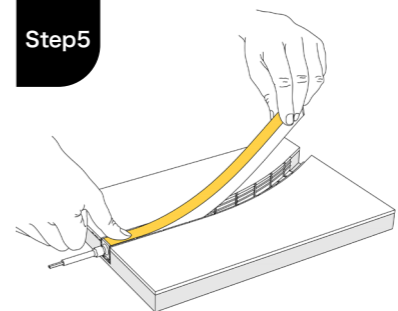
Use screws to secure the profile to the grooved installation surface.

Step4



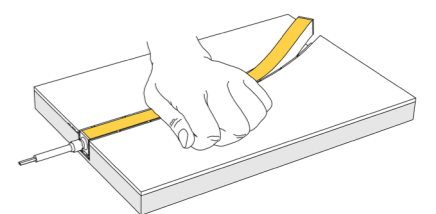
Fix the flange edge of the profile with cement paste (ensure it is level with the installation surface).

Step5



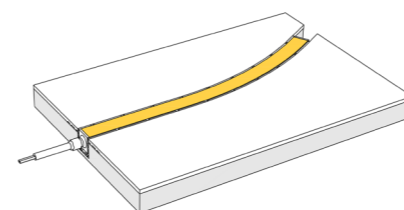
Use your thumb to first fix the starting end of the strip (with wires).

Step6

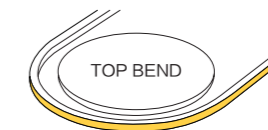


Use your palm to gradually press the Neon strip into the profile.

Step7



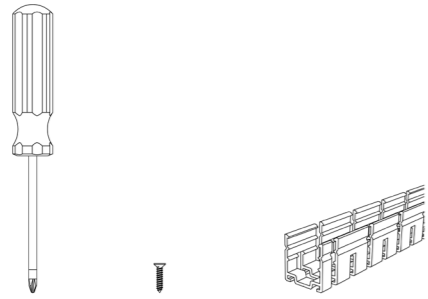
Ensure that the strip is parallel to the profile and installed smoothly in place (as shown in the figure)



The minimum bending diameter of **AC167-SCRL** is 600mm for top bending and 600mm for side bending;

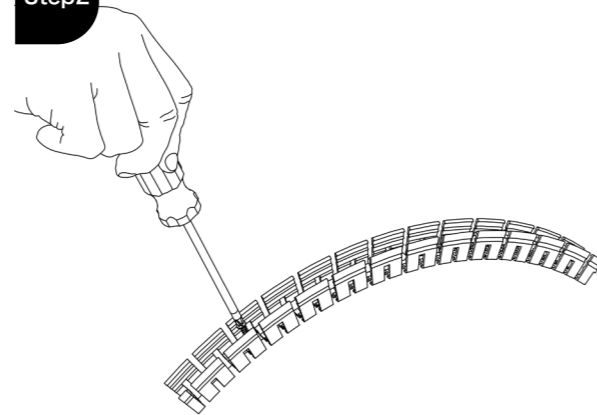
Aluminium Profile: AC167-CR

Step1



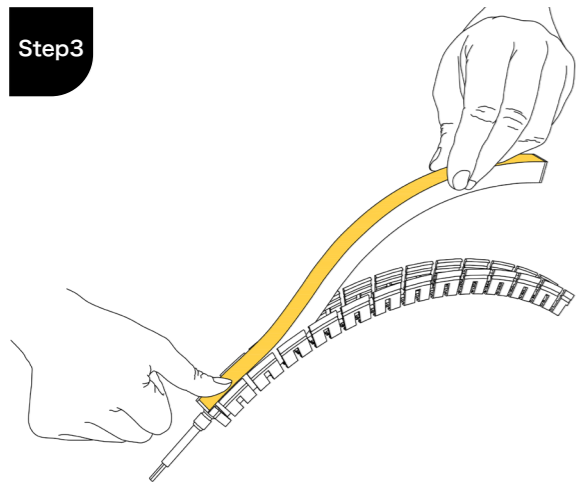
Preparation: Gather all tools and materials.

Step2



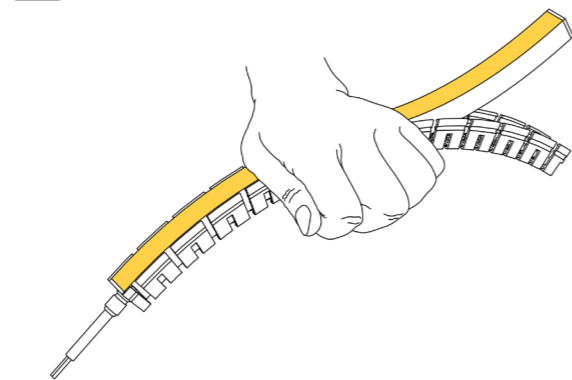
Select the curved installation surface. Bend the profile to fit tightly against the surface and secure it with screws.

Step3



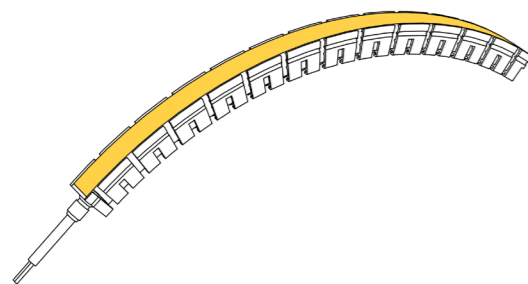
Use your thumb to first fix the starting end of the strip (with wires).

Step4

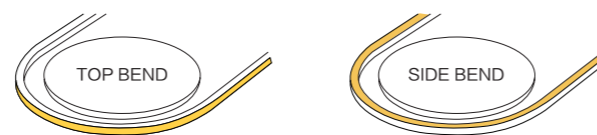


Use your palm to gradually press the Neon strip into the profile.

Step5



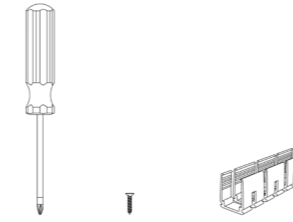
Ensure that the strip is parallel to the profile and installed smoothly in place (as shown in the figure).



! The minimum bending diameter of **AC167-CR** is 600mm for top bending and 600mm for side bending.

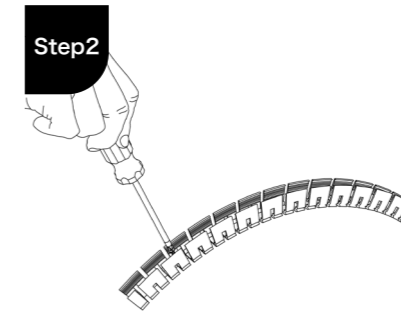
PC Profile: AC167-CPC

Step1



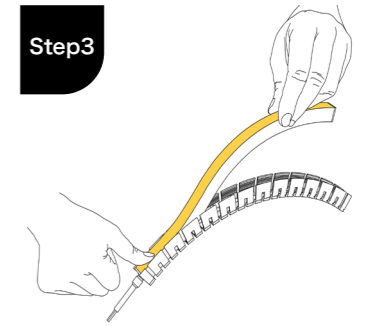
Preparation: Gather all tools and materials.

Step2



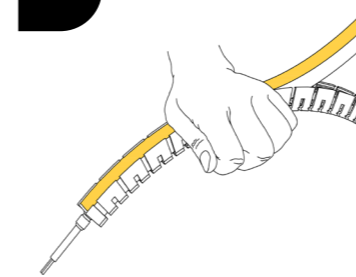
Select the curved installation surface. Bend the profile to fit tightly against the surface and secure it with screws.

Step3



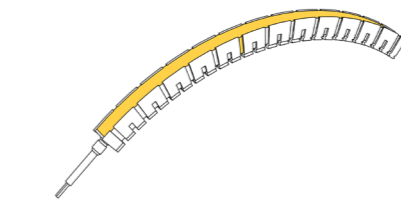
Use your thumb to first fix the starting end of the strip (with wires).

Step4

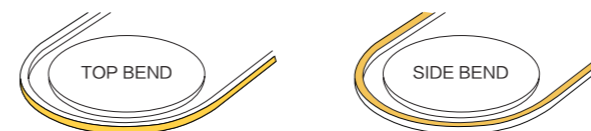


Use your palm to gradually press the Neon strip into the profile.

Step5

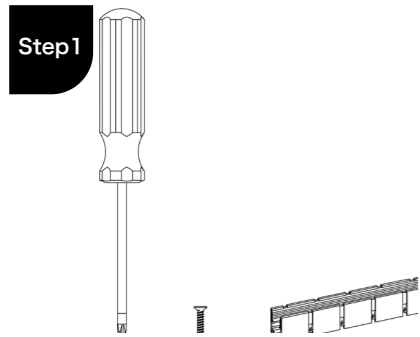


Ensure that the strip is parallel to the profile and installed smoothly in place (as shown in the figure)

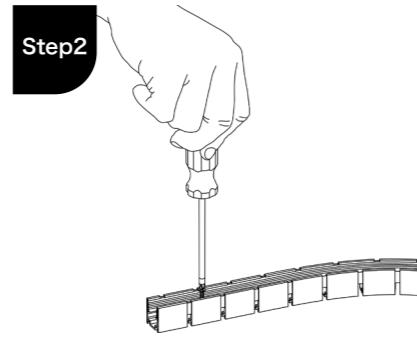


! The minimum bending diameter of **AC167-CPC** is 300mm for top bending and 300mm for side bending.

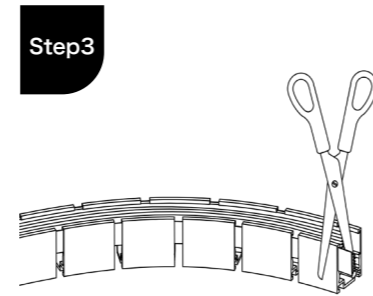
PC Profile: AC167-CSGP



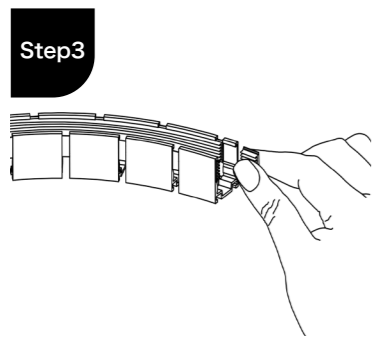
Preparation: Gather all tools and materials.



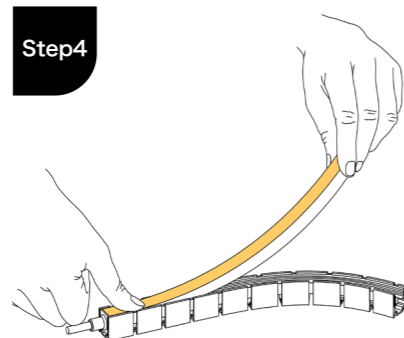
Select the curved installation surface. Bend the profile to fit tightly against the surface and secure it with screws.



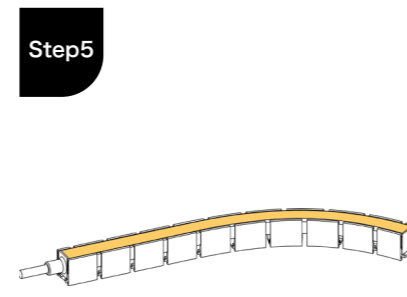
After bending the profile, trim off the excess silicone tape on the inside



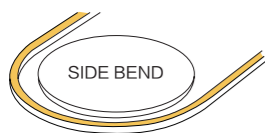
Insert the cut silicone tape into the missing section on the outside



Use your thumb to first fix the starting end of the strip (with wires). Then use your palm to gradually press the Neon strip into the profile.



Ensure that the strip is parallel to the profile and installed smoothly in place (as shown in the figure)

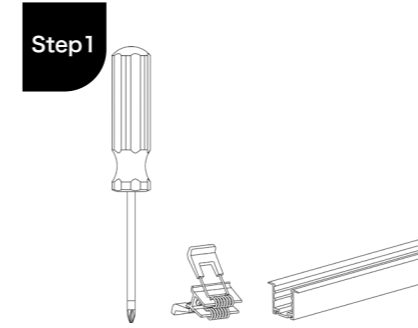


! The minimum bending diameter of **AC167-CSGP** is 600mm for side bending.

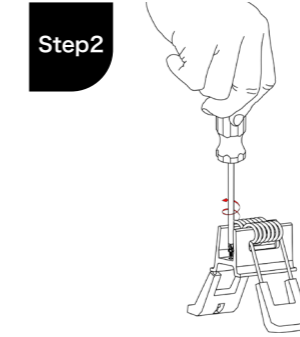
!

- 1.The profiles are shipped without holes or screws by default;
- 2.Please pay attention to the bending direction and minimum bending diameter when installing the Neon strip;
- 3.Please have at least two people cooperate during the installation of the Neon strip, one person installing the Neon strip and one person supporting the Neon strip to prevent excessive distortion;
- 4.Please pay attention to the bending direction and minimum bending diameter when installing bendable profiles;
- 5.When removing the Neon strip from the profile, please use screws to slowly lift the Neon strip from the bottom of the profile

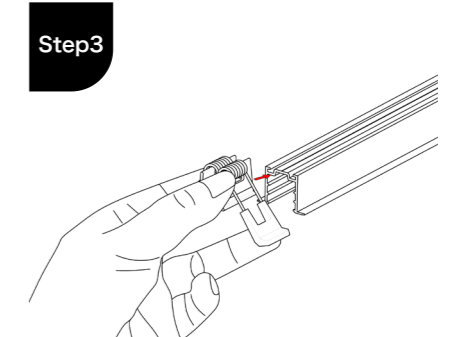
Angle Mounting Bracket: AC167-SET-LC



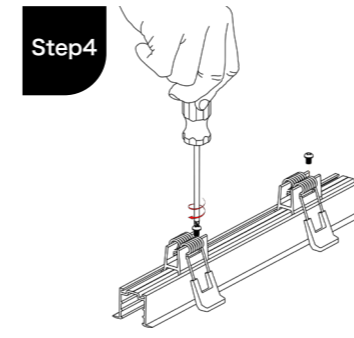
Preparation: Gather all tools and materials.



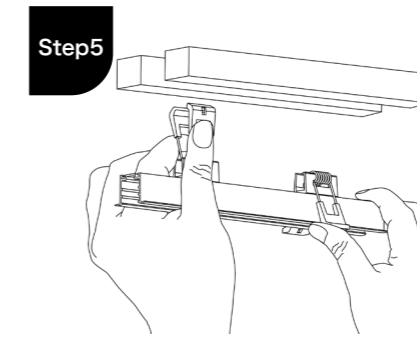
Remove the screw from the clip.



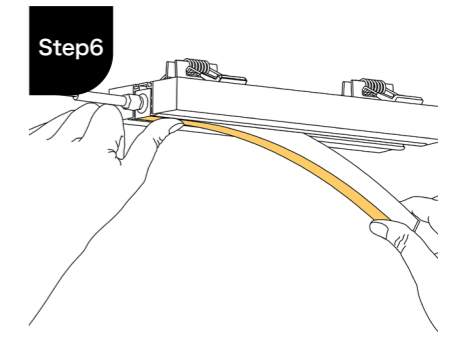
Grip the spring clip and slide into the profile.



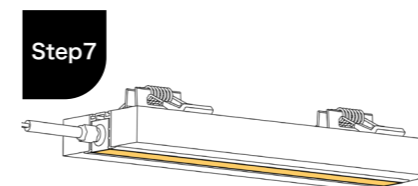
Lock the clip tightly.



Grip the spring clip and insert the profile into the slot.



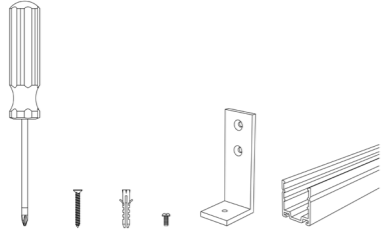
Use your thumb to first fix the starting end of the strip (with wires). Then use your palm to gradually press the Neon strip into the profile.



Ensure that the strip is parallel to the profile and installed smoothly in place (as shown in the figure).

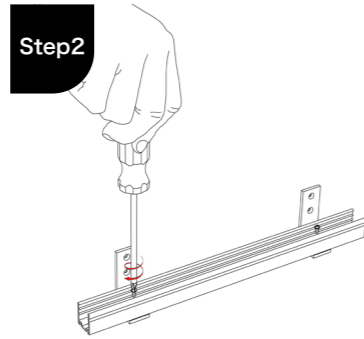
AL Shape Mounting Bracket: AC167-SET-LA

Step1



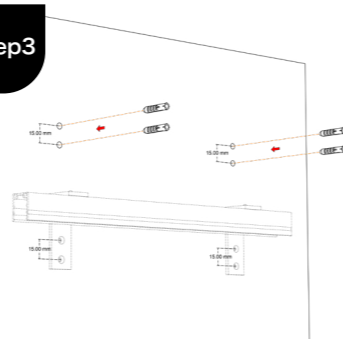
Preparation: Gather all tools and materials.

Step2



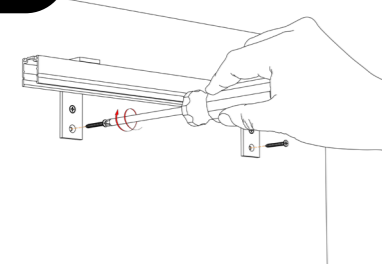
Drill holes in the profile and place it on the short side of the L-shaped bracket. Thread small screws through the holes in the profile and the short side of the L-shaped bracket, tighten them, and ensure they are firmly connected.

Step3



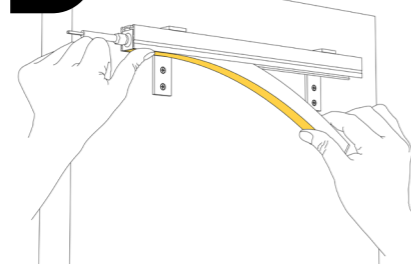
Drill holes on the surface to be installed according to the size of the screws. The distance between the centers of the two screw holes is around 15mm.

Step4



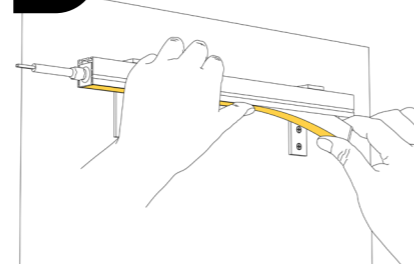
Pick up the fixed profile and bracket, align the two holes on the long side of the L-shaped bracket with the pre drilled holes, and then lock them with long screws.
(Note: first screw in the screws from one left and one right, and then screw in the second screw from one left and one right).

Step5



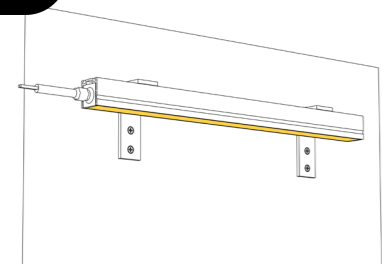
Use your thumb to first fix the starting end of the strip (with wires).

Step6



Then gradually press the Neon strip into the profile.

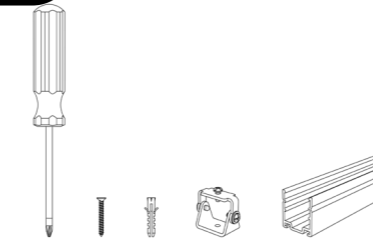
Step7



Ensure that the strip is parallel to the profile and installed smoothly in place (as shown in the figure).

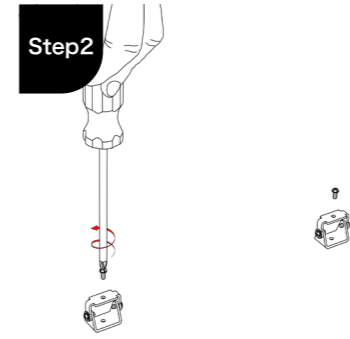
Angle Mounting Bracket: AC167-AMB

Step1



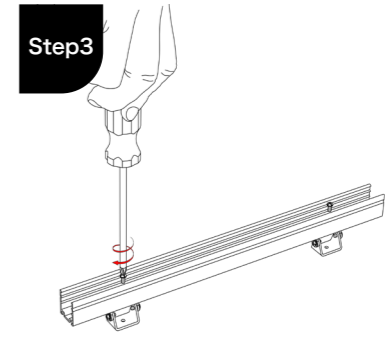
Preparation: Gather all tools and materials.

Step2



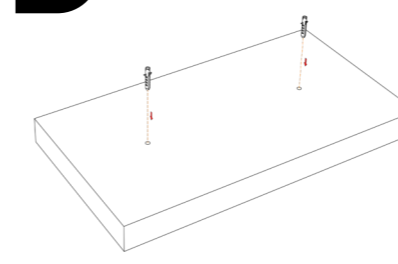
Unscrew all the screws on the rotating bracket.

Step3



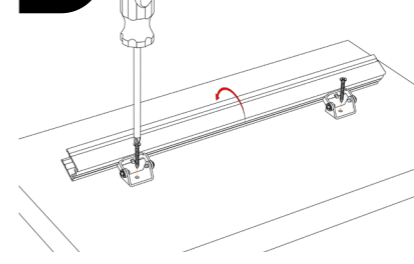
Thread the screws removed from the rotating bracket through the corresponding holes on the profile, tighten them, and ensure that they are securely connected to the rotating bracket.

Step4



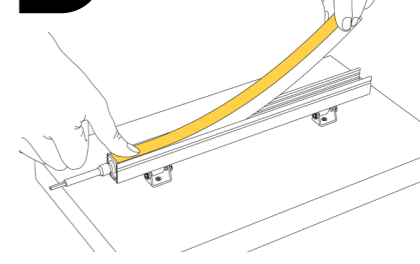
Drill holes on the surface to be installed according to the size of the screws.

Step5



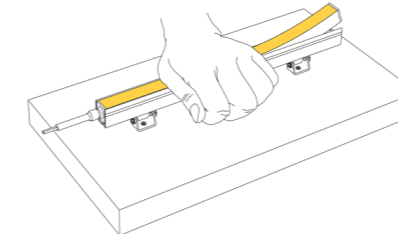
Fix the rotating bracket onto the installation surface with screws.

Step6



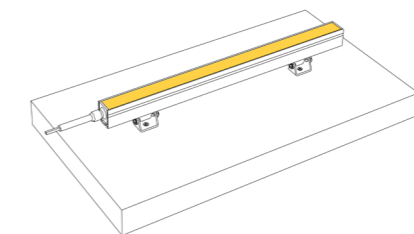
Use your thumb to first fix the starting end of the strip (with wires).

Step7



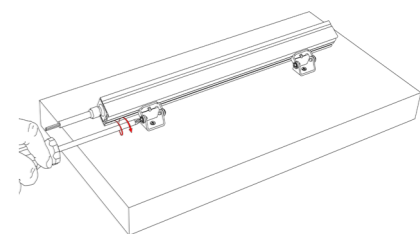
Use your palm to gradually press the Neon strip into the profile.

Step8



Ensure that the strip is parallel to the profile and installed smoothly in place (as shown in the figure).

Step9



Rotate the rotating bracket to the desired angle, and then use a screwdriver to tighten the screws on the side of the rotating bracket to fix the angle.